

Datasheet for ABIN1499433
anti-METTL16 antibody



[Go to Product page](#)

1 Image

Overview

Quantity:	100 µL
Target:	METTL16
Reactivity:	Human
Host:	Mouse
Clonality:	Monoclonal
Conjugate:	This METTL16 antibody is un-conjugated
Application:	Western Blotting (WB)

Product Details

Immunogen:	Full length human recombinant protein of human METT10D(NP_076991) produced in HEK293T cell.
	Type of Immunogen: Recombinant protein
Clone:	5F10
Isotype:	IgG2b
Specificity:	Human METTL16 / METT10D
Purification:	Protein A/G purified

Target Details

Target:	METTL16
Alternative Name:	METTL16 / METT10D (METTL16 Products)

Target Details

Background:	Name/Gene ID: METTL16
	Synonyms: METTL16, METT10D, Methyltransferase like 16
Gene ID:	79066
NCBI Accession:	NP_076991
UniProt:	Q86W50

Application Details

Application Notes:	Approved: WB (1:2000)
Comment:	Target Species of Antibody: Human
Restrictions:	For Research Use only

Handling

Format:	Liquid
Concentration:	Lot specific
Buffer:	PBS, pH 7.3, 1 % BSA, 50 % glycerol, 0.02 % sodium azide
Preservative:	Sodium azide
Precaution of Use:	This product contains Sodium azide: a POISONOUS AND HAZARDOUS SUBSTANCE which should be handled by trained staff only.
Handling Advice:	Minimize freezing and thawing.
Storage:	-20 °C
Storage Comment:	Store at -20°C. Avoid freeze-thaw cycles.

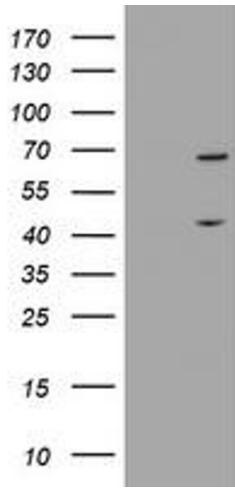


Image 1.