



Datasheet for ABIN1499482  
**anti-MAP2K4 antibody**



[Go to Product page](#)

6 Images

Overview

Quantity:	100 µL
Target:	MAP2K4
Reactivity:	Human
Host:	Mouse
Clonality:	Monoclonal
Conjugate:	This MAP2K4 antibody is un-conjugated
Application:	Western Blotting (WB), Immunohistochemistry (IHC), Immunofluorescence (IF), Immunohistochemistry (Paraffin-embedded Sections) (IHC (p))

Product Details

Immunogen:	Protein expressed in 293T cell transfected with human MAP2K4 expression vector. Type of Immunogen: Transfected Cells
Clone:	2E4
Isotype:	IgG2b
Specificity:	Human MKK4
Purification:	Protein A/G purified

Target Details

Target:	MAP2K4
Alternative Name:	MAP2K4 / MKK4 ( <a href="#">MAP2K4 Products</a> )

## Target Details

---

Background:	Name/Gene ID: MAP2K4 Subfamily: MAP2K Family: Protein Kinase  Synonyms: MAP2K4, JNK activating kinase 1, JNK-activated kinase 1, JNK-activating kinase 1, MAPK/ERK kinase 4, MAPKK4, JNKK1, PRKMK4, SAPKK1, SEK1, MEK4, MKK4, SAPK/ERK kinase 1, SERK1, JNKK, MAP kinase kinase 4, MAPKK 4, MEK 4, SAPK kinase 1, SAPKK-1, SKK1
Gene ID:	6416
UniProt:	<a href="#">P45985</a>
Pathways:	<a href="#">MAPK Signaling</a> , <a href="#">TLR Signaling</a> , <a href="#">Fc-epsilon Receptor Signaling Pathway</a> , <a href="#">Activation of Innate immune Response</a> , <a href="#">Toll-Like Receptors Cascades</a> , <a href="#">BCR Signaling</a>

## Application Details

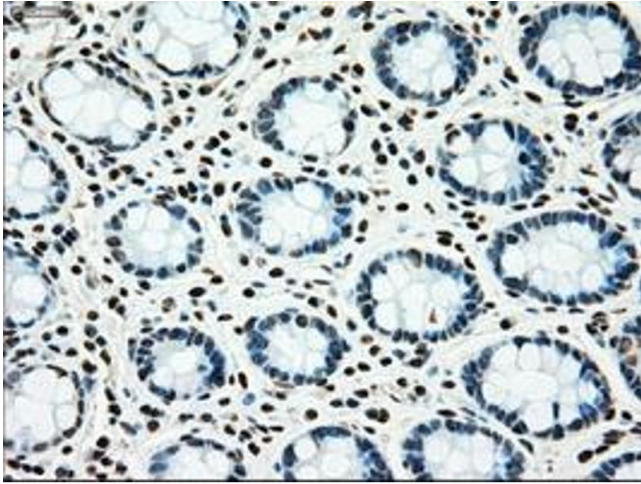
---

Application Notes:	Approved: IF, IHC, IHC-P (1:50), WB  Usage: Concentration: 0.5-1.0 mg/mL (Lot dependent)
Comment:	Target Species of Antibody: Human
Restrictions:	For Research Use only

## Handling

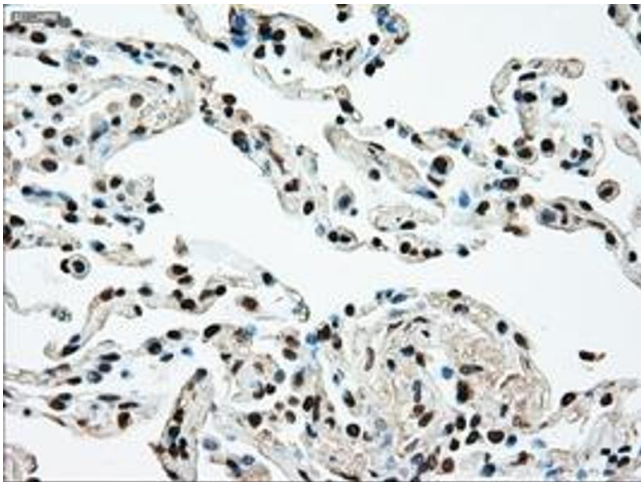
---

Format:	Liquid
Concentration:	Lot specific
Buffer:	PBS, pH 7.3, 1 % BSA, 50 % glycerol, 0.02 % sodium azide
Preservative:	Sodium azide
Precaution of Use:	This product contains Sodium azide: a POISONOUS AND HAZARDOUS SUBSTANCE which should be handled by trained staff only.
Handling Advice:	Minimize freezing and thawing.
Storage:	-20 °C
Storage Comment:	Store at -20°C. Avoid freeze-thaw cycles.

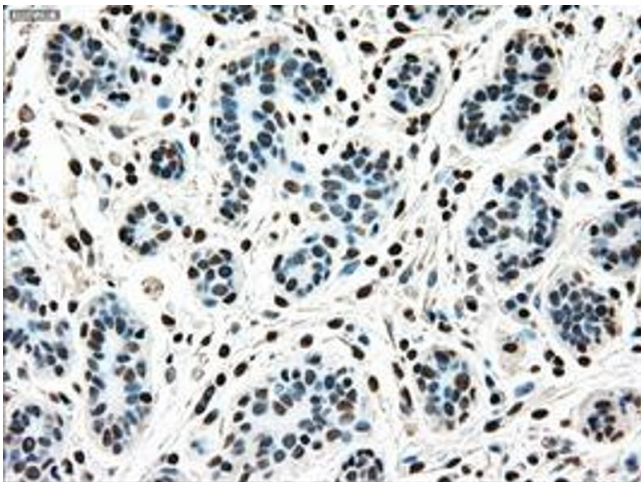


**Immunohistochemistry**

**Image 1.**



**Image 2.**



**Immunohistochemistry**

**Image 3.**

Please check the [product details page](#) for more images. Overall 6 images are available for ABIN1499482.