



[Go to Product page](#)

Datasheet for ABIN1499543

anti-MPI antibody

9 Images

Overview

Quantity:	100 µL
Target:	MPI
Reactivity:	Human
Host:	Mouse
Clonality:	Monoclonal
Conjugate:	This MPI antibody is un-conjugated
Application:	Western Blotting (WB), Immunohistochemistry (IHC), Immunofluorescence (IF), Flow Cytometry (FACS), Immunohistochemistry (Paraffin-embedded Sections) (IHC (p))

Product Details

Immunogen:	Full length human recombinant protein of human MPI(NP_002426) produced in HEK293T cell. Type of Immunogen: Recombinant protein
Clone:	1C7
Isotype:	IgG1
Specificity:	Human MPI / PMI1
Purification:	Protein A/G purified

Target Details

Target:	MPI
Alternative Name:	MPI / PMI1 (MPI Products)

Target Details

Background: Name/Gene ID: MPI

Synonyms: MPI, CDG1B, Mannose phosphate isomerase, Mannose-6-phosphate isomerase, Mannose-6-phosphate isomerase, Phosphohexomutase, Phosphomannose isomerase 1, Phosphomannose isomerase, PMI, PMI1

Gene ID: 4351

NCBI Accession: [NP_002426](#)

UniProt: [P34949](#)

Application Details

Application Notes: Approved: Flo (1:100), IF (1:100), IHC, IHC-P (1:150), WB (1:2000)

Comment: Target Species of Antibody: Human

Restrictions: For Research Use only

Handling

Format: Liquid

Concentration: Lot specific

Buffer: PBS, pH 7.3, 1 % BSA, 50 % glycerol, 0.02 % sodium azide

Preservative: Sodium azide

Precaution of Use: This product contains Sodium azide: a POISONOUS AND HAZARDOUS SUBSTANCE which should be handled by trained staff only.

Handling Advice: Minimize freezing and thawing.

Storage: -20 °C

Storage Comment: Store at -20°C. Avoid freeze-thaw cycles.

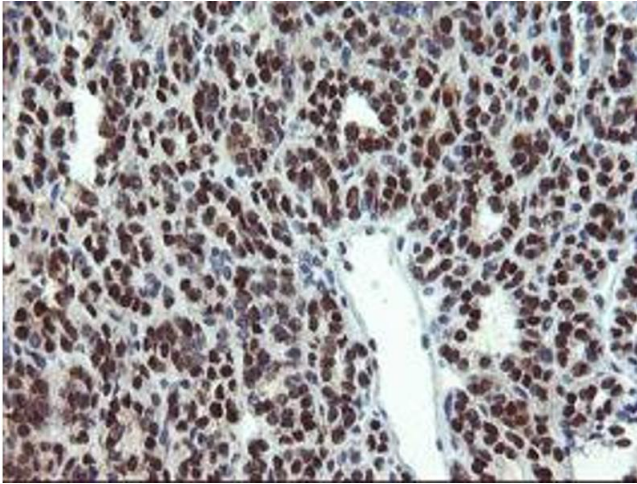


Image 1.

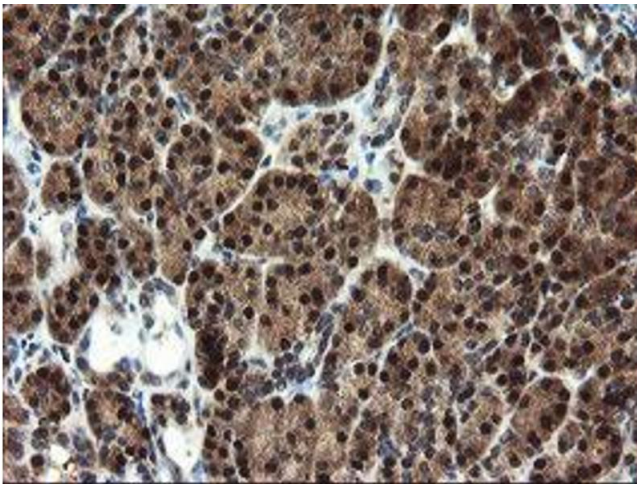
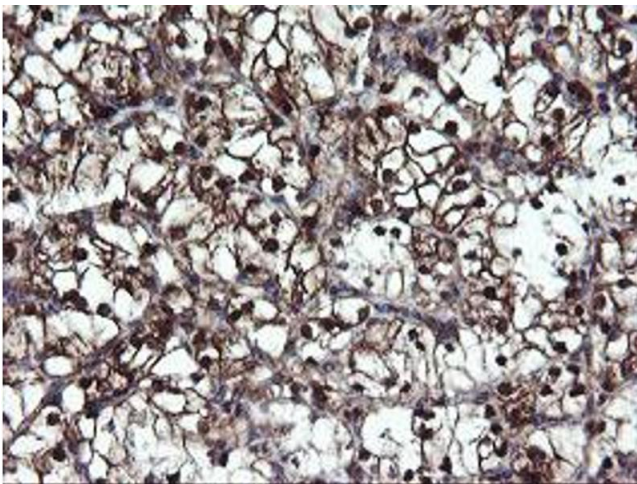


Image 2.



Immunohistochemistry

Image 3.

Please check the [product details page](#) for more images. Overall 9 images are available for ABIN1499543.