

Datasheet for ABIN1499571

## anti-MSI1 antibody

8 Images



[Go to Product page](#)

### Overview

Quantity:	100 µL
Target:	MSI1
Reactivity:	Human, Monkey
Host:	Mouse
Clonality:	Monoclonal
Conjugate:	This MSI1 antibody is un-conjugated
Application:	Western Blotting (WB), Immunohistochemistry (IHC), Flow Cytometry (FACS), Immunofluorescence (IF), Immunohistochemistry (Paraffin-embedded Sections) (IHC (p))

### Product Details

Immunogen:	Full length human recombinant protein of human MSI1 (NP_002433) produced in HEK293T cell.  Type of Immunogen: Recombinant protein
Clone:	1G8
Isotype:	IgG2a
Specificity:	Human MSI1 / Musashi 1
Purification:	Protein A/G purified

### Target Details

Target:	MSI1
---------	------

## Target Details

---

Alternative Name: MSI1 / Musashi 1 ([MSI1 Products](#))

Background: Name/Gene ID: MSI1

Synonyms: MSI1, Musashi homolog 1 (Drosophila), Musashi RNA-binding protein 1, Musashi (Drosophila) homolog 1, Musashi1, Musashi 1, Musashi-1

Gene ID: 4440

NCBI Accession: [NP\\_002433](#)

Pathways: [Stem Cell Maintenance](#)

## Application Details

---

Application Notes: Approved: Flo (1:100), IF (1:100), IHC, IHC-P (1:150), WB (1:1000 - 1:2000)

Comment: Target Species of Antibody: Human

Restrictions: For Research Use only

## Handling

---

Format: Liquid

Concentration: Lot specific

Buffer: PBS, pH 7.3, 1 % BSA, 50 % glycerol, 0.02 % sodium azide

Preservative: Sodium azide

Precaution of Use: This product contains Sodium azide: a POISONOUS AND HAZARDOUS SUBSTANCE which should be handled by trained staff only.

Storage: -20 °C

Storage Comment: Store at -20°C. Avoid freeze-thaw cycles.

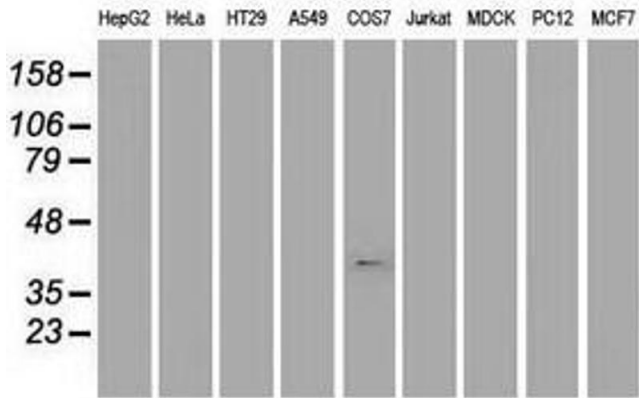


Image 1.

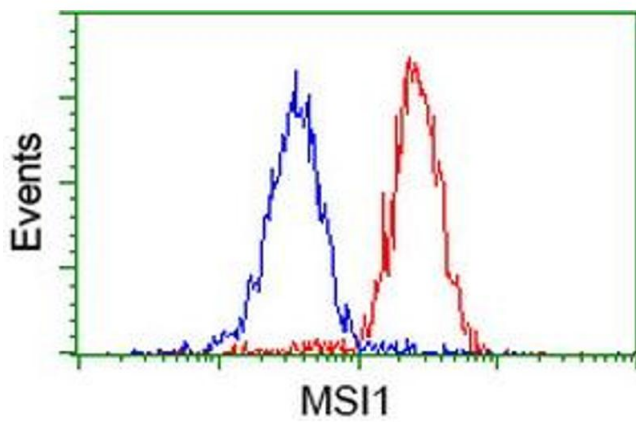


Image 2.

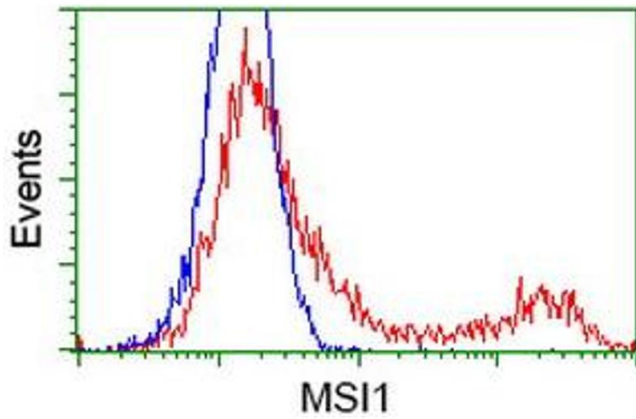


Image 3.

Please check the [product details page](#) for more images. Overall 8 images are available for ABIN1499571.