



[Go to Product page](#)

Datasheet for ABIN1499574

## anti-MSI1 antibody

### 2 Images

#### Overview

Quantity:	100 µL
Target:	MSI1
Reactivity:	Human
Host:	Mouse
Clonality:	Monoclonal
Conjugate:	This MSI1 antibody is un-conjugated
Application:	Western Blotting (WB), Immunofluorescence (IF)

#### Product Details

Immunogen:	Full length human recombinant protein of human MSI1(NP_002433) produced in HEK293T cell. Type of Immunogen: Recombinant protein
Clone:	2B2
Isotype:	IgG1
Specificity:	Human MSI1 / Musashi 1
Purification:	Protein A/G purified

#### Target Details

Target:	MSI1
Alternative Name:	MSI1 / Musashi 1 ( <a href="#">MSI1 Products</a> )

## Target Details

---

Background:	Name/Gene ID: MSI1  Synonyms: MSI1, Musashi homolog 1 (Drosophila), Musashi RNA-binding protein 1, Musashi (Drosophila) homolog 1, Musashi1, Musashi 1, Musashi-1
Gene ID:	4440
NCBI Accession:	<a href="#">NP_002433</a>
UniProt:	<a href="#">O43347</a>
Pathways:	<a href="#">Stem Cell Maintenance</a>

## Application Details

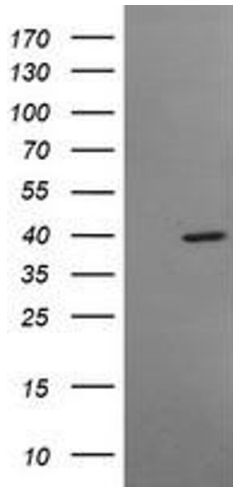
---

Application Notes:	Approved: IF (1:100), WB (1:2000)
Comment:	Target Species of Antibody: Human
Restrictions:	For Research Use only

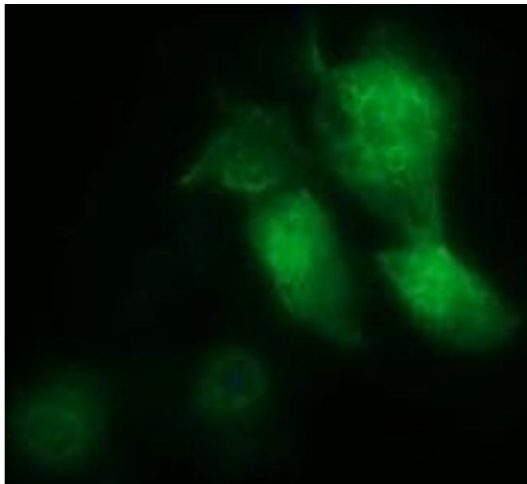
## Handling

---

Format:	Liquid
Concentration:	Lot specific
Buffer:	PBS, pH 7.3, 1 % BSA, 50 % glycerol, 0.02 % sodium azide
Preservative:	Sodium azide
Precaution of Use:	This product contains Sodium azide: a POISONOUS AND HAZARDOUS SUBSTANCE which should be handled by trained staff only.
Handling Advice:	Minimize freezing and thawing.
Storage:	-20 °C
Storage Comment:	Store at -20°C. Avoid freeze-thaw cycles.



**Image 1.**



**Image 2.**