

Datasheet for ABIN1499686

## anti-NEK6 antibody

### 8 Images



[Go to Product page](#)

### Overview

Quantity:	100 µL
Target:	NEK6
Reactivity:	Human
Host:	Mouse
Clonality:	Monoclonal
Application:	Western Blotting (WB), Immunohistochemistry (IHC), Immunohistochemistry (Paraffin-embedded Sections) (IHC (p)), Immunoprecipitation (IP)

### Product Details

Immunogen:	Full length human recombinant protein of human NEK6 (NP_055212) produced in HEK293T cell. Type of Immunogen: Recombinant protein
Clone:	2H7
Isotype:	IgG1
Specificity:	Human NEK6
Purification:	Protein A/G purified

### Target Details

Target:	NEK6
Alternative Name:	NEK6 ( <a href="#">NEK6 Products</a> )

## Target Details

---

Background:	Name/Gene ID: NEK6 Subfamily: NEK Family: Protein Kinase  Synonyms: NEK6, NIMA-related kinase 6, Protein kinase SID6-1512, NimA-related protein kinase 6, SID6-1512
Gene ID:	10783
NCBI Accession:	<a href="#">NP_055212</a>

## Application Details

---

Application Notes:	Approved: IHC, IHC-P (1:50), IP, WB (1:1000)  Usage: Concentration: 0.5-1.0 mg/mL (Lot dependent)
Comment:	Target Species of Antibody: Human
Restrictions:	For Research Use only

## Handling

---

Format:	Liquid
Concentration:	Lot specific
Buffer:	PBS, pH 7.3, 1 % BSA, 50 % glycerol, 0.02 % sodium azide
Preservative:	Sodium azide
Precaution of Use:	This product contains Sodium azide: a POISONOUS AND HAZARDOUS SUBSTANCE which should be handled by trained staff only.
Storage:	-20 °C
Storage Comment:	Store at -20°C. Avoid freeze-thaw cycles.

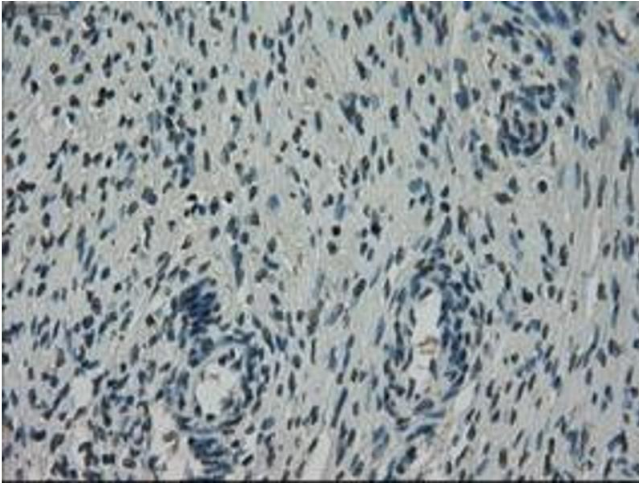


Image 1.

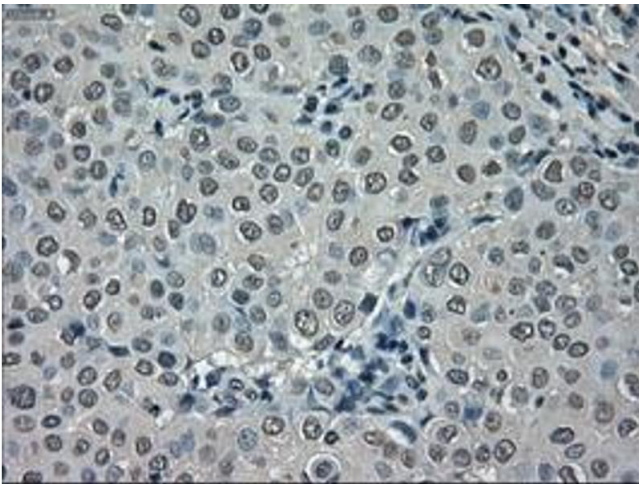


Image 2.

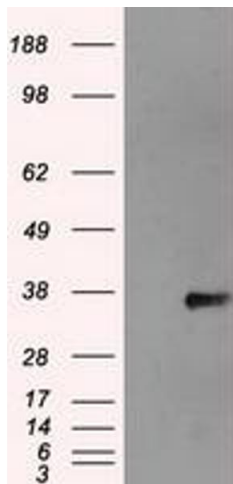


Image 3.

Please check the [product details page](#) for more images. Overall 8 images are available for ABIN1499686.