



Datasheet for ABIN1499887
anti-NXNL2 antibody



[Go to Product page](#)

8 Images

Overview

Quantity:	100 µL
Target:	NXNL2
Reactivity:	Human, Monkey
Host:	Mouse
Clonality:	Monoclonal
Conjugate:	This NXNL2 antibody is un-conjugated
Application:	Western Blotting (WB), Immunohistochemistry (IHC), Immunohistochemistry (Paraffin-embedded Sections) (IHC (p)), Immunofluorescence (IF), Flow Cytometry (FACS)

Product Details

Immunogen:	Full length human recombinant protein of human NXNL2 (NP_660326) produced in HEK293T cell.
	Type of Immunogen: Recombinant protein
Clone:	3A12
Isotype:	IgG1
Specificity:	Human NXNL2
Purification:	Protein A/G purified

Target Details

Target:	NXNL2
---------	-------

Target Details

Alternative Name: [NXNL2 \(NXNL2 Products\)](#)

Background: Name/Gene ID: NXNL2

Synonyms: NXNL2, C9orf121, Nucleoredoxin-like protein 2, RDCVF2, Nucleoredoxin-like 2

Gene ID: 158046

NCBI Accession: [NP_660326](#)

UniProt: [Q5VZ03](#)

Application Details

Application Notes: Approved: Flo (1:100), IF (1:100), IHC, IHC-P (1:50), WB (1:1000 - 1:2000)

Usage: Concentration: 0.5-1.0 mg/mL (Lot dependent)

Comment: Target Species of Antibody: Human

Restrictions: For Research Use only

Handling

Format: Liquid

Concentration: Lot specific

Buffer: PBS, pH 7.3, 1 % BSA, 50 % glycerol, 0.02 % sodium azide

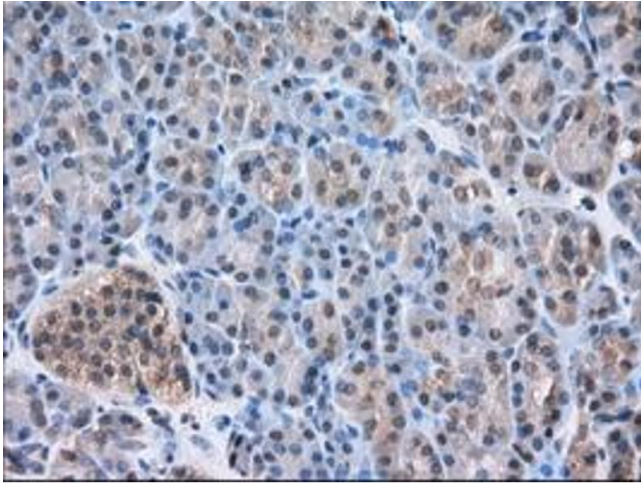
Preservative: Sodium azide

Precaution of Use: This product contains Sodium azide: a POISONOUS AND HAZARDOUS SUBSTANCE which should be handled by trained staff only.

Handling Advice: Minimize freezing and thawing.

Storage: -20 °C

Storage Comment: Store at -20°C. Avoid freeze-thaw cycles.



Immunohistochemistry

Image 1.

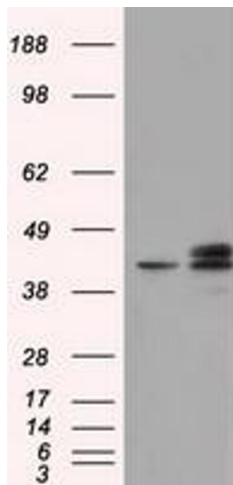


Image 2.

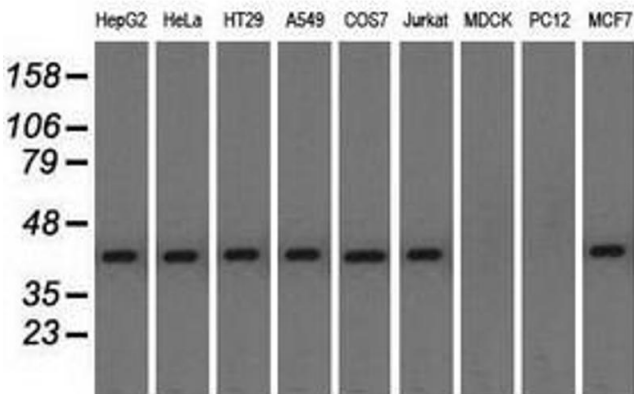


Image 3.

Please check the [product details page](#) for more images. Overall 8 images are available for ABIN1499887.