



Datasheet for ABIN1499895
anti-CTAG1B antibody



[Go to Product page](#)

7 Images

Overview

Quantity:	100 µL
Target:	CTAG1B
Reactivity:	Human
Host:	Mouse
Clonality:	Monoclonal
Conjugate:	This CTAG1B antibody is un-conjugated
Application:	Western Blotting (WB), Immunohistochemistry (IHC), Immunofluorescence (IF), Immunohistochemistry (Paraffin-embedded Sections) (IHC (p))

Product Details

Immunogen:	Full length human recombinant protein of human CTAG1B(NP_001318) produced in HEK293T cell. Type of Immunogen: Recombinant protein
Clone:	4C12
Isotype:	IgG2a
Specificity:	Human NY-ESO-1
Purification:	Protein A/G purified

Target Details

Target:	CTAG1B
---------	--------

Target Details

Alternative Name: CTAG1B / NY-ESO-1 ([CTAG1B Products](#))

Background: Name/Gene ID: CTAG1B

Synonyms: CTAG1B, Cancer/testis antigen 1B, Cancer antigen 3, Cancer/testis antigen 1, Cancer/testis antigen 6.1, CTAG, CT6.1, LAGE2A, L antigen family member 2, LAGE-2, LAGE2, NY-ESO-1, CTAG1, ESO1, LAGE2B, CTAG1A

Gene ID: 1485

NCBI Accession: [NP_001318](#)

UniProt: [P78358](#)

Application Details

Application Notes: Approved: IF (1:100), IHC, IHC-P (1:150), WB (1:4000)

Comment: Target Species of Antibody: Human

Restrictions: For Research Use only

Handling

Format: Liquid

Concentration: Lot specific

Buffer: PBS, pH 7.3, 1 % BSA, 50 % glycerol, 0.02 % sodium azide

Preservative: Sodium azide

Precaution of Use: This product contains Sodium azide: a POISONOUS AND HAZARDOUS SUBSTANCE which should be handled by trained staff only.

Handling Advice: Minimize freezing and thawing.

Storage: -20 °C

Storage Comment: Store at -20°C. Avoid freeze-thaw cycles.

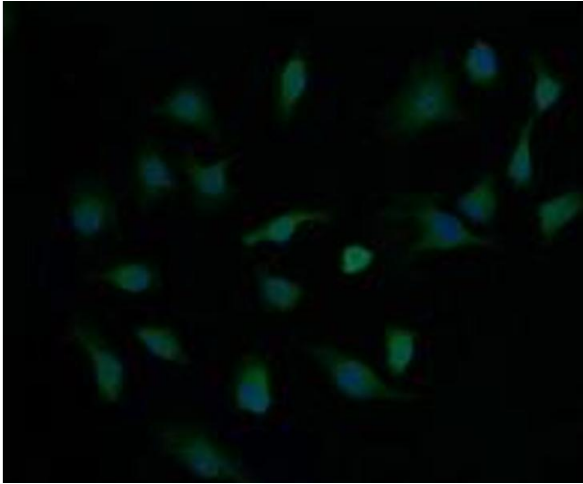


Image 1.

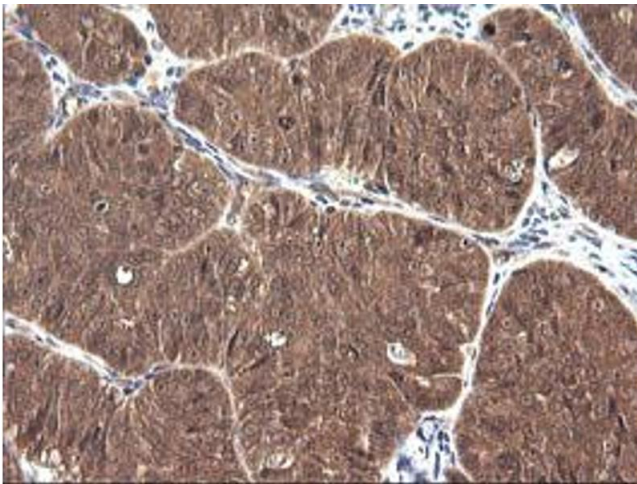


Image 2.

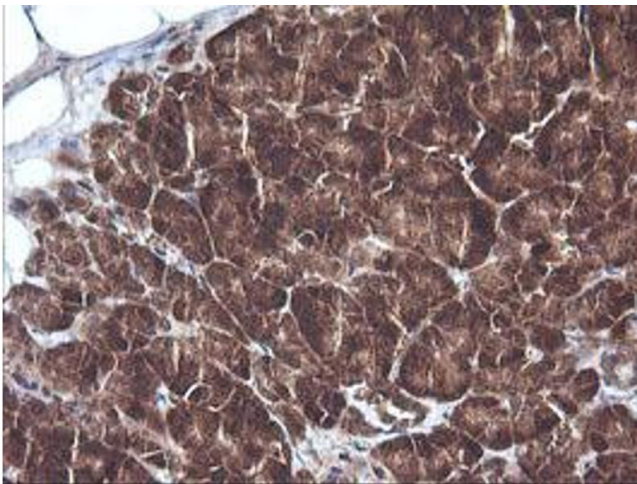


Image 3.

Please check the [product details page](#) for more images. Overall 7 images are available for ABIN1499895.