



[Go to Product page](#)

Datasheet for ABIN1499952  
**anti-MAPK13 antibody**

4 Images

Overview

Quantity:	100 µL
Target:	MAPK13
Reactivity:	Human, Mouse, Rat, Monkey, Dog
Host:	Mouse
Clonality:	Monoclonal
Conjugate:	This MAPK13 antibody is un-conjugated
Application:	Western Blotting (WB), Immunofluorescence (IF), Immunohistochemistry (IHC), Immunohistochemistry (Paraffin-embedded Sections) (IHC (p))

Product Details

Immunogen:	Full length human recombinant protein of human MAPK13(NP_002745) produced in HEK293T cell.  Type of Immunogen: Recombinant protein
Clone:	12B2
Isotype:	IgG2b
Specificity:	Human P38delta / MAPK13
Purification:	Protein A/G purified

Target Details

Target:	MAPK13
---------	--------

## Target Details

---

Alternative Name:	MAPK13 / p38delta ( <a href="#">MAPK13 Products</a> )
Background:	Name/Gene ID: MAPK13 Subfamily: MAPK Family: Protein Kinase  Synonyms: MAPK13, MAPK-13, MAPK 13, p38delta, PRKM13, SAPK4, Serk 4, MAP kinase 13, MAP kinase p38 delta
Gene ID:	5603
NCBI Accession:	<a href="#">NP_002745</a>
UniProt:	<a href="#">O15264</a>
Pathways:	<a href="#">MAPK Signaling</a> , <a href="#">Neurotrophin Signaling Pathway</a> , <a href="#">Hepatitis C</a> , <a href="#">BCR Signaling</a> , <a href="#">S100 Proteins</a>

## Application Details

---

Application Notes:	Approved: IF (1:100), IHC, IHC-P (1:150), WB (1:200 - 1:2000)
Comment:	Target Species of Antibody: Human
Restrictions:	For Research Use only

## Handling

---

Format:	Liquid
Concentration:	Lot specific
Buffer:	PBS, pH 7.3, 1 % BSA, 50 % glycerol, 0.02 % sodium azide
Preservative:	Sodium azide
Precaution of Use:	This product contains Sodium azide: a POISONOUS AND HAZARDOUS SUBSTANCE which should be handled by trained staff only.
Handling Advice:	Minimize freezing and thawing.
Storage:	-20 °C
Storage Comment:	Store at -20°C. Avoid freeze-thaw cycles.

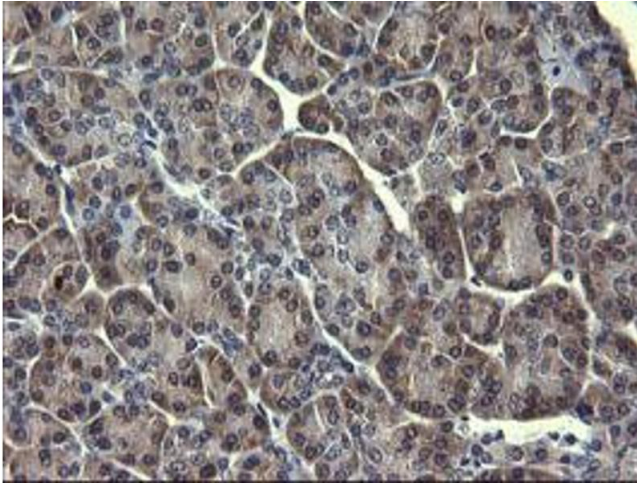


Image 1.

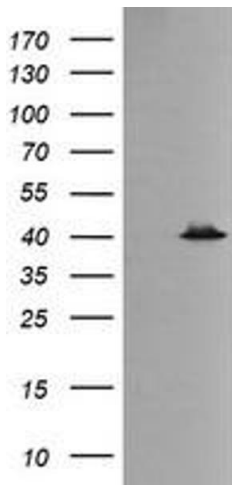


Image 2.

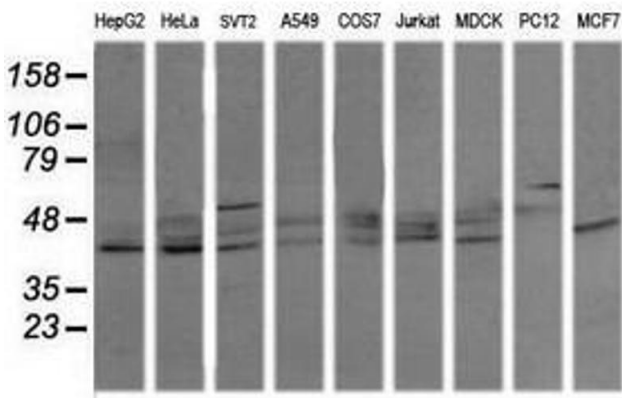


Image 3.

Please check the [product details page](#) for more images. Overall 4 images are available for ABIN1499952.