

Datasheet for ABIN1499956
anti-MAPK13 antibody



[Go to Product page](#)

3 Images

Overview

Quantity:	100 µL
Target:	MAPK13
Reactivity:	Human, Mouse, Rat, Monkey, Dog
Host:	Mouse
Clonality:	Monoclonal
Conjugate:	This MAPK13 antibody is un-conjugated
Application:	Western Blotting (WB), Immunofluorescence (IF)

Product Details

Immunogen:	Full length human recombinant protein of human MAPK13(NP_002745) produced in HEK293T cell. Type of Immunogen: Recombinant protein
Clone:	2G1
Isotype:	IgG1
Specificity:	Human P38delta / MAPK13
Purification:	Protein A/G purified

Target Details

Target:	MAPK13
Alternative Name:	MAPK13 / p38delta (MAPK13 Products)

Target Details

Background: Name/Gene ID: MAPK13
Subfamily: MAPK
Family: Protein Kinase

Synonyms: MAPK13, MAPK-13, MAPK 13, p38delta, PRKM13, SAPK4, Serk 4, MAP kinase 13, MAP kinase p38 delta

Gene ID: 5603

NCBI Accession: [NP_002745](#)

Pathways: [MAPK Signaling](#), [Neurotrophin Signaling Pathway](#), [Hepatitis C](#), [BCR Signaling](#), [S100 Proteins](#)

Application Details

Application Notes: Approved: IF (1:100), WB (1:200 - 1:2000)

Comment: Target Species of Antibody: Human

Restrictions: For Research Use only

Handling

Format: Liquid

Concentration: Lot specific

Buffer: PBS, pH 7.3, 1 % BSA, 50 % glycerol, 0.02 % sodium azide

Preservative: Sodium azide

Precaution of Use: This product contains Sodium azide: a POISONOUS AND HAZARDOUS SUBSTANCE which should be handled by trained staff only.

Storage: -20 °C

Storage Comment: Store at -20°C. Avoid freeze-thaw cycles.

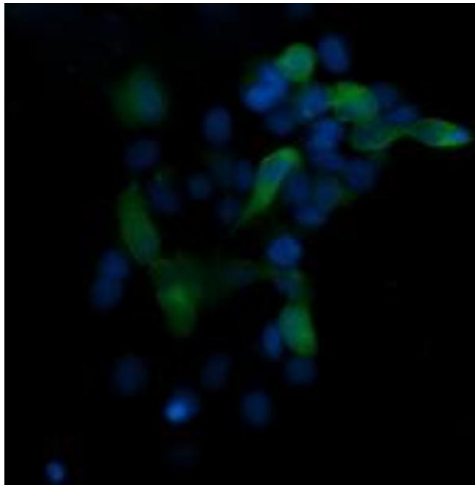


Image 1.

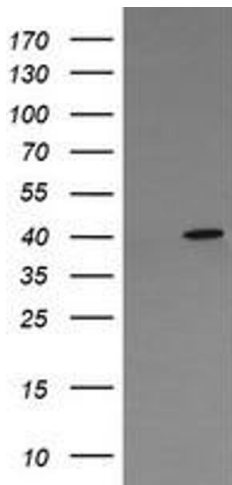


Image 2.

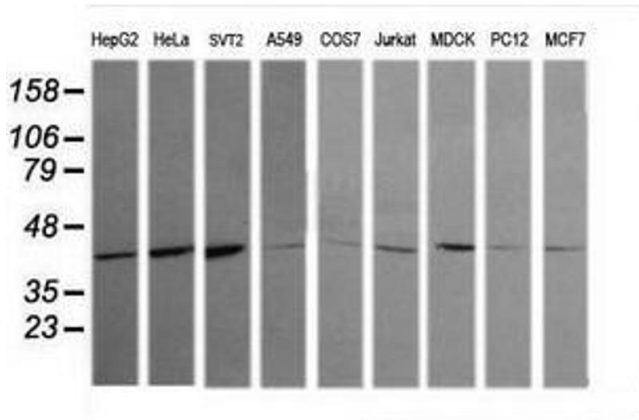


Image 3.