



[Go to Product page](#)

Datasheet for ABIN1500224  
**anti-PINX1 antibody (AA 1-221)**

1 Image

Overview

Quantity:	100 µL
Target:	PINX1
Binding Specificity:	AA 1-221
Reactivity:	Human
Host:	Rabbit
Clonality:	Polyclonal
Conjugate:	This PINX1 antibody is un-conjugated
Application:	Western Blotting (WB)

Product Details

Immunogen:	Recombinant protein fragment contain a sequence corresponding to a region within amino acids 1 and 221 (Q96BK5) of PINX1. Percent identity by BLAST analysis: Human (100%), Bovine (81%).  Type of Immunogen: Recombinant protein
Isotype:	IgG
Specificity:	Human PINX1
Predicted Reactivity:	Percent identity by BLAST analysis: Human (100%) Bovine (81%).
Purification:	Immunoaffinity purified

## Target Details

---

Target:	PINX1
Alternative Name:	PINX1 ( <a href="#">PINX1 Products</a> )
Background:	Name/Gene ID: PINX1  Synonyms: PINX1, 67-11-3 protein, LPTS, PIN2 interacting protein 1, Pin2-interacting protein X1, LPTL, PIN2-interacting protein 1, Protein 67-11-3, TRF1-interacting protein 1
Gene ID:	54984
UniProt:	<a href="#">Q96BK5</a>

## Application Details

---

Application Notes:	Approved: WB (1:500 - 1:3000)  Usage: Suggested starting dilutions are as follows: Western blot: 1:500-1:3000. Not yet tested in other applications. Optimal working dilutions should be determined experimentally by the end user.
Comment:	Target Species of Antibody: Human
Restrictions:	For Research Use only

## Handling

---

Format:	Liquid
Concentration:	Lot specific
Buffer:	PBS, pH 7, 1 % BSA, 20 % Glycerol, 0.01 % Thimerosal
Preservative:	Thimerosal (Merthiolate)
Precaution of Use:	This product contains Thimerosal (Merthiolate): a POISONOUS AND HAZARDOUS SUBSTANCE which should be handled by trained staff only.
Handling Advice:	Avoid freeze-thaw cycles.
Storage:	-20 °C
Storage Comment:	Aliquot and freeze at -20°C. Avoid freeze-thaw cycles.

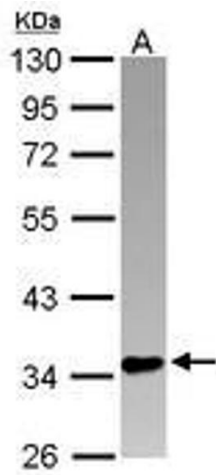


Image 1.