



[Go to Product page](#)

Datasheet for ABIN1500229
anti-PKC epsilon antibody

14 Images

Overview

Quantity:	100 µL
Target:	PKC epsilon (PRKCE)
Reactivity:	Human, Monkey, Dog
Host:	Mouse
Clonality:	Monoclonal
Application:	Western Blotting (WB), Immunohistochemistry (IHC), Immunofluorescence (IF), Flow Cytometry (FACS), Immunohistochemistry (Paraffin-embedded Sections) (IHC (p))

Product Details

Immunogen:	Full length human recombinant protein of human PRKCE (NP_005391) produced in HEK293T cell. Type of Immunogen: Recombinant protein
Clone:	2A12
Isotype:	IgG2b
Specificity:	Human PKC Epsilon
Purification:	Protein A/G purified

Target Details

Target:	PKC epsilon (PRKCE)
Alternative Name:	PRKCE / PKC-Epsilon (PRKCE Products)

Target Details

Background:	Name/Gene ID: PRKCE Subfamily: PKC Family: Protein Kinase Synonyms: PRKCE, NPKC-epsilon, PKC epsilon, Protein kinase C epsilon, Protein kinase C epsilon type, Pkcepsilon, PKCE, Protein kinase C, epsilon
Gene ID:	5581
NCBI Accession:	NP_005391
UniProt:	Q02156
Pathways:	TCR Signaling , EGFR Signaling Pathway , Neurotrophin Signaling Pathway , Positive Regulation of Peptide Hormone Secretion , Activation of Innate immune Response , Cellular Response to Molecule of Bacterial Origin , Regulation of Actin Filament Polymerization , Myometrial Relaxation and Contraction , Regulation of Carbohydrate Metabolic Process , Interaction of EGFR with phospholipase C-gamma , Thromboxane A2 Receptor Signaling

Application Details

Application Notes:	Approved: Flo (1:100), IF (1:100), IHC, IHC-P (1:150), WB (1:1000 - 1:2000)
Comment:	Target Species of Antibody: Human
Restrictions:	For Research Use only

Handling

Format:	Liquid
Concentration:	Lot specific
Buffer:	PBS, pH 7.3, 1 % BSA, 50 % glycerol, 0.02 % sodium azide
Preservative:	Sodium azide
Precaution of Use:	This product contains Sodium azide: a POISONOUS AND HAZARDOUS SUBSTANCE which should be handled by trained staff only.
Handling Advice:	Minimize freezing and thawing.
Storage:	-20 °C
Storage Comment:	Store at -20°C. Avoid freeze-thaw cycles.

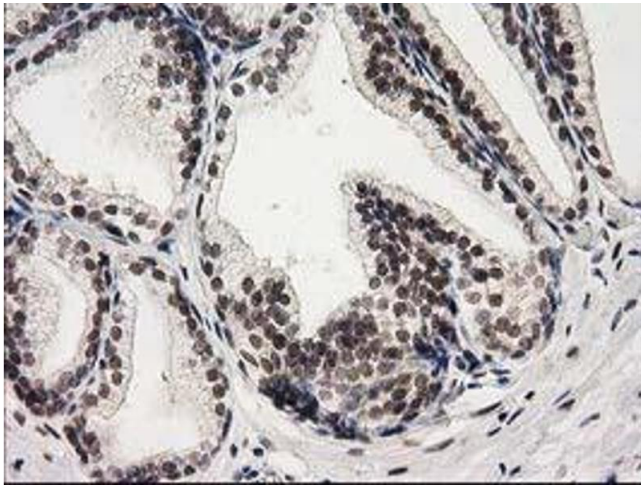


Image 1.

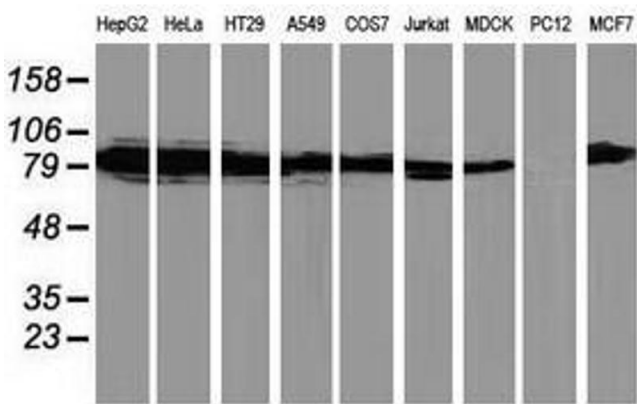


Image 2.

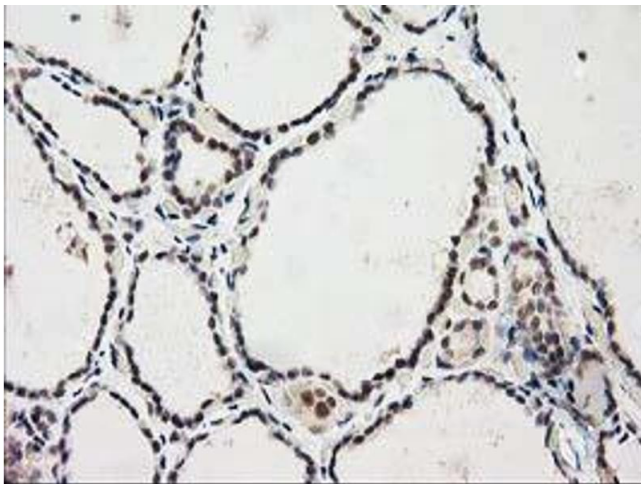


Image 3.

Please check the [product details page](#) for more images. Overall 14 images are available for ABIN1500229.