



[Go to Product page](#)

Datasheet for ABIN1500261  
**anti-PLA2G1B antibody (AA 1-148)**

1 Image

Overview

Quantity:	100 µL
Target:	PLA2G1B
Binding Specificity:	AA 1-148
Reactivity:	Human
Host:	Rabbit
Clonality:	Polyclonal
Conjugate:	This PLA2G1B antibody is un-conjugated
Application:	Western Blotting (WB)

Product Details

Immunogen:	Recombinant fragment corresponding to a region within amino acids 1 and 148 of PLA2G1B (SwissProt P04054). Percent identity by BLAST analysis: Human (100%), Dog (88%), Porcine (83%), Mouse, Rat (80%).  Type of Immunogen: Recombinant protein
Isotype:	IgG
Specificity:	Human PLA2G1B
Predicted Reactivity:	Percent identity by BLAST analysis: Human (100%) Dog (88%) Porcine (83%) Mouse, Rat (80%).
Purification:	Immunoaffinity purified

## Target Details

---

Target:	PLA2G1B
Alternative Name:	PLA2G1B / PLA2 ( <a href="#">PLA2G1B Products</a> )
Background:	Name/Gene ID: PLA2G1B Family: Phospholipase  Synonyms: PLA2G1B, Group IB phospholipase A2, Phospholipase A2, PLA2A, PPLA2, PLA2
Gene ID:	5319
UniProt:	<a href="#">P04054</a>
Pathways:	<a href="#">Inositol Metabolic Process</a> , <a href="#">VEGF Signaling</a>

## Application Details

---

Application Notes:	Approved: WB (1:500 - 1:3000)  Usage: Suggested starting dilutions are as follows: Western blot: 1:500-1:3000. Not yet tested in other applications. Optimal working dilutions should be determined experimentally by the end user.
Comment:	Target Species of Antibody: Human
Restrictions:	For Research Use only

## Handling

---

Format:	Liquid
Concentration:	Lot specific
Buffer:	0.1 M Tris-glycine, pH 7, 20 % Glycerol, 0.01 % Thimerosal
Preservative:	Thimerosal (Merthiolate)
Precaution of Use:	This product contains Thimerosal (Merthiolate): a POISONOUS AND HAZARDOUS SUBSTANCE which should be handled by trained staff only.
Handling Advice:	Avoid freeze-thaw cycles.
Storage:	-20 °C
Storage Comment:	Aliquot and freeze at -20°C. Avoid freeze-thaw cycles.

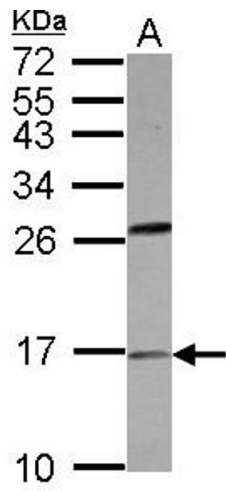


Image 1.