



[Go to Product page](#)

Datasheet for ABIN1500264
anti-Pallidin antibody

4 Images

Overview

Quantity:	100 µL
Target:	Pallidin (PLDN)
Reactivity:	Human, Mouse
Host:	Mouse
Clonality:	Monoclonal
Conjugate:	This Pallidin antibody is un-conjugated
Application:	Western Blotting (WB), Immunohistochemistry (IHC), Flow Cytometry (FACS), Immunohistochemistry (Paraffin-embedded Sections) (IHC (p))

Product Details

Immunogen:	Full length human recombinant protein of human PLDN(NP_036520) produced in HEK293T cell. Type of Immunogen: Recombinant protein
Clone:	1H9
Isotype:	IgG1
Specificity:	Human PLDN / Pallidin
Purification:	Protein A/G purified

Target Details

Target:	Pallidin (PLDN)
Alternative Name:	PLDN / Pallidin (PLDN Products)

Target Details

Background:	Name/Gene ID: BLOC1S6 Synonyms: BLOC1S6, HPS9, Pallid protein homolog, Pallidin, Pallidin homolog (mouse), PLDN, Syntaxin 13 binding protein 1, Pa, PALLID
Gene ID:	26258
NCBI Accession:	NP_036520
Pathways:	Synaptic Vesicle Exocytosis

Application Details

Application Notes:	Approved: Flo (1:100), IHC, IHC-P (1:150), WB (1:500 - 1:2000)
Comment:	Target Species of Antibody: Human
Restrictions:	For Research Use only

Handling

Format:	Liquid
Concentration:	Lot specific
Buffer:	PBS, pH 7.3, 1 % BSA, 50 % glycerol, 0.02 % sodium azide
Preservative:	Sodium azide
Precaution of Use:	This product contains Sodium azide: a POISONOUS AND HAZARDOUS SUBSTANCE which should be handled by trained staff only.
Storage:	-20 °C
Storage Comment:	Store at -20°C. Avoid freeze-thaw cycles.

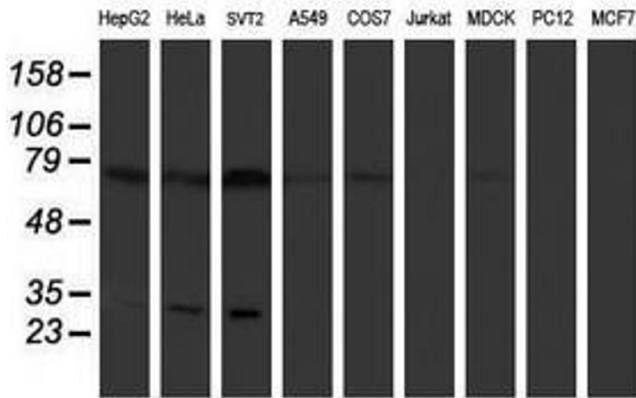
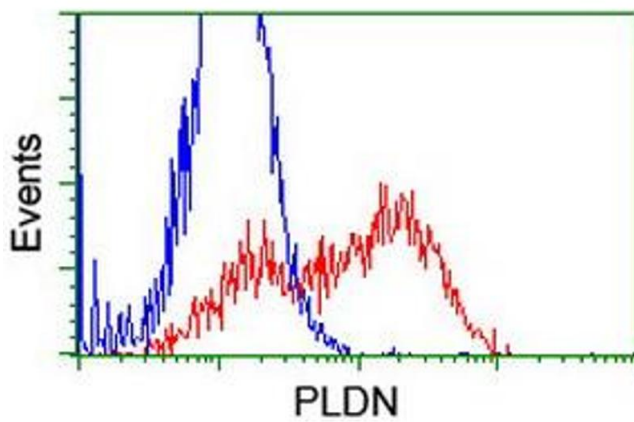
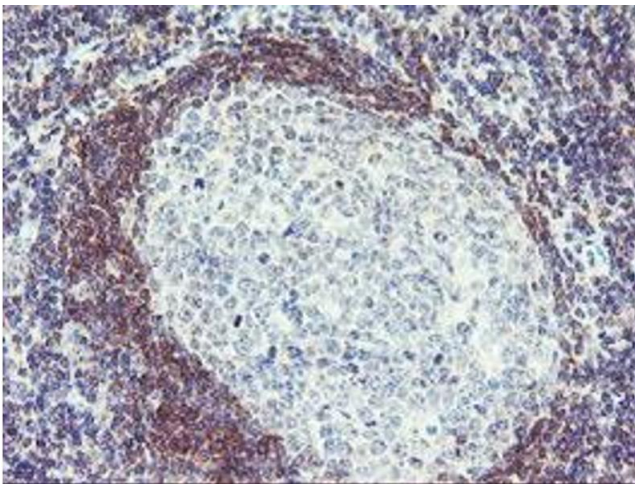


Image 1.



Flow Cytometry

Image 2.



Immunohistochemistry

Image 3.

Please check the [product details page](#) for more images. Overall 4 images are available for ABIN1500264.