



[Go to Product page](#)

Datasheet for ABIN1500280

## anti-PLK1 antibody

### 4 Images

#### Overview

Quantity:	100 µL
Target:	PLK1
Reactivity:	Human
Host:	Mouse
Clonality:	Monoclonal
Conjugate:	This PLK1 antibody is un-conjugated
Application:	Western Blotting (WB), Immunohistochemistry (IHC), Immunohistochemistry (Paraffin-embedded Sections) (IHC (p)), Immunoprecipitation (IP), Flow Cytometry (FACS)

#### Product Details

Immunogen:	Protein expressed in 293T cell transfected with human PLK1 expression vector. Type of Immunogen: Transfected Cells
Clone:	3F12
Isotype:	IgG1
Specificity:	Human PLK / PLK1
Purification:	Protein A/G purified

#### Target Details

Target:	PLK1
Alternative Name:	PLK1 / PLK-1 ( <a href="#">PLK1 Products</a> )

## Target Details

---

Background: Name/Gene ID: PLK1  
Subfamily: Polo  
Family: Protein Kinase  
  
Synonyms: PLK1, Polo like kinase, Polo-like kinase (Drosophila), Polo-like kinase 1, STPK13, Polo (Drosophia)-like kinase, PLK, PLK-1

---

Gene ID: 5347

---

UniProt: [P53350](#)

---

Pathways: [Cell Division Cycle, M Phase](#)

---

## Application Details

---

Application Notes: Approved: Flo (1:100), IHC, IHC-P (1:150), IP, WB (1:2000)

Usage: Concentration: 0.5-1.0 mg/mL (Lot dependent)

---

Comment: Target Species of Antibody: Human

---

Restrictions: For Research Use only

---

## Handling

---

Format: Liquid

---

Concentration: Lot specific

---

Buffer: PBS, pH 7.3, 1 % BSA, 50 % glycerol, 0.02 % sodium azide

---

Preservative: Sodium azide

---

Precaution of Use: This product contains Sodium azide: a POISONOUS AND HAZARDOUS SUBSTANCE which should be handled by trained staff only.

---

Handling Advice: Minimize freezing and thawing.

---

Storage: -20 °C

---

Storage Comment: Store at -20°C. Avoid freeze-thaw cycles.

---

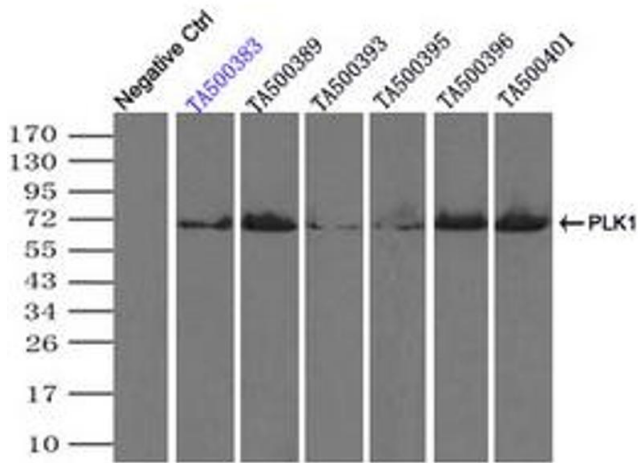


Image 1.

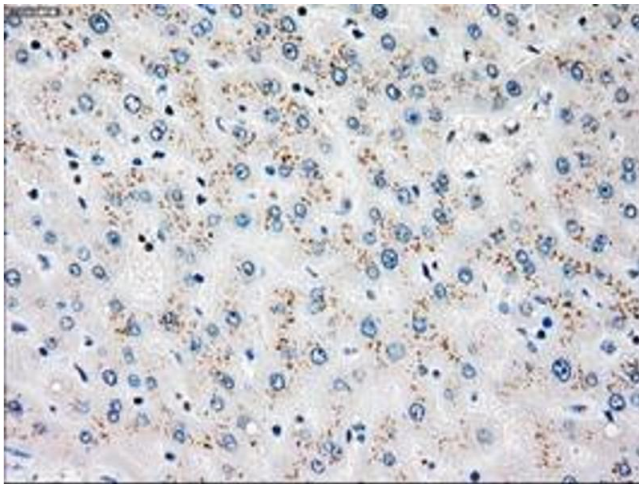
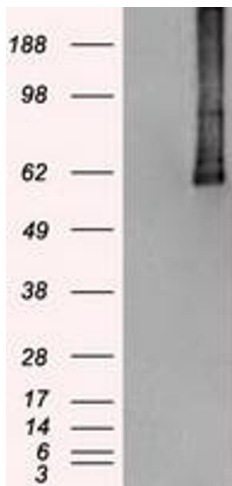


Image 2.



Western Blotting

Image 3.

Please check the [product details page](#) for more images. Overall 4 images are available for ABIN1500280.