



[Go to Product page](#)

Datasheet for ABIN1500360
anti-PPEF1 antibody (AA 361-650)

2 Images

Overview

Quantity:	100 µL
Target:	PPEF1
Binding Specificity:	AA 361-650
Reactivity:	Human
Host:	Rabbit
Clonality:	Polyclonal
Conjugate:	This PPEF1 antibody is un-conjugated
Application:	Western Blotting (WB), Immunohistochemistry (IHC), Immunohistochemistry (Paraffin-embedded Sections) (IHC (p))

Product Details

Immunogen:	Recombinant fragment corresponding to a region within amino acids 361 and 650 of PPEF1 (SwissProt O14829). Percent identity by BLAST analysis: Type of Immunogen: Recombinant protein
Isotype:	IgG
Specificity:	Human PPEF1
Predicted Reactivity:	Percent identity by BLAST analysis:
Purification:	Immunoaffinity purified

Target Details

Target:	PPEF1
Alternative Name:	PPEF / PPEF1 (PPEF1 Products)
Background:	Name/Gene ID: PPEF1 Subfamily: RdgC Family: Protein Phosphatase Synonyms: PPEF1, PPEF, PPP7C, PP7, PPEF-1, PPP7CA, Protein phosphatase PP7
Gene ID:	5475
UniProt:	O14829
Pathways:	Regulation of G-Protein Coupled Receptor Protein Signaling

Application Details

Application Notes:	Approved: IHC, IHC-P (1:100 - 1:1000), WB (1:5000 - 1:20000) Usage: Suggested starting dilutions are as follows: Western blot: 1:5000-1:20000, IHC-Paraffin: 1:100-1:1000 [suggested antigen retrieval using heat mediated 10 mM Citrate buffer (pH 6.0) or Tris-EDTA buffer (pH 8.0)]. Not yet tested in other applications. Optimal working dilutions should be determined experimentally by the end user.
Comment:	Target Species of Antibody: Human
Restrictions:	For Research Use only

Handling

Format:	Liquid
Concentration:	Lot specific
Buffer:	PBS, pH 7, 1 % BSA, 20 % Glycerol, 0.01 % Thimerosal
Preservative:	Thimerosal (Merthiolate)
Precaution of Use:	This product contains Thimerosal (Merthiolate): a POISONOUS AND HAZARDOUS SUBSTANCE which should be handled by trained staff only.
Handling Advice:	Avoid freeze-thaw cycles.
Storage:	-20 °C

Handling

Storage Comment: Aliquot and freeze at -20°C. Avoid freeze-thaw cycles.

Images

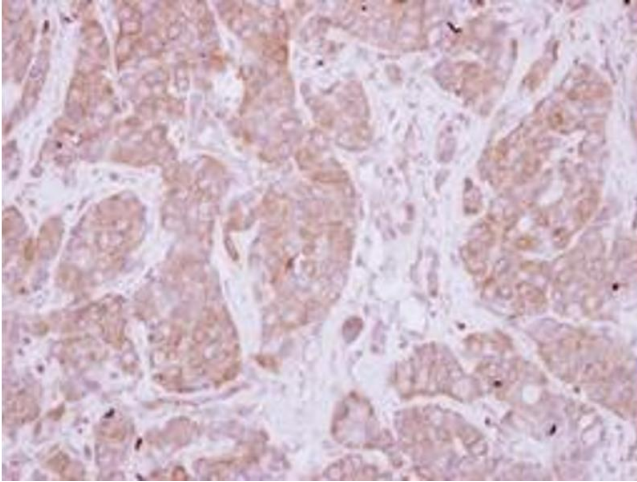


Image 1.

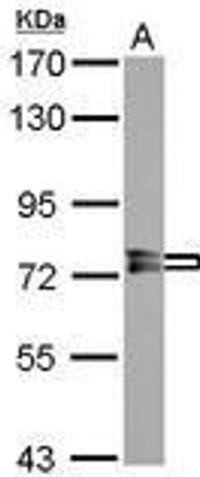


Image 2.