



[Go to Product page](#)

Datasheet for ABIN1500376  
**anti-PPM1B antibody**

5 Images

### Overview

Quantity:	100 µL
Target:	PPM1B
Reactivity:	Human, Rat, Dog, Monkey
Host:	Mouse
Clonality:	Monoclonal
Conjugate:	This PPM1B antibody is un-conjugated
Application:	Western Blotting (WB), Flow Cytometry (FACS)

### Product Details

Immunogen:	Full length human recombinant protein of human PPM1B (NP_002697) produced in HEK293T cell.  Type of Immunogen: Recombinant protein
Clone:	3F2
Isotype:	IgG1
Specificity:	Human PPM1B
Purification:	Protein A/G purified

### Target Details

Target:	PPM1B
Alternative Name:	PPM1B ( <a href="#">PPM1B Products</a> )

## Target Details

---

Background: Name/Gene ID: PPM1B  
Subfamily: PP2C  
Family: Protein Phosphatase

Synonyms: PPM1B, Phosphatase 2c beta, PPC2BETAX, PP2C-beta, Protein phosphatase 2A beta, Protein phosphatase 1B, PP2CB, PP2CBETA, PP2C-beta-X

---

Gene ID: 5495

---

NCBI Accession: [NP\\_002697](#)

---

## Application Details

---

Application Notes: Approved: Flo (1:100), WB (1:500 - 1:2000)

---

Comment: Target Species of Antibody: Human

---

Restrictions: For Research Use only

---

## Handling

---

Format: Liquid

---

Concentration: Lot specific

---

Buffer: PBS, pH 7.3, 1 % BSA, 50 % glycerol, 0.02 % sodium azide

---

Preservative: Sodium azide

---

Precaution of Use: This product contains Sodium azide: a POISONOUS AND HAZARDOUS SUBSTANCE which should be handled by trained staff only.

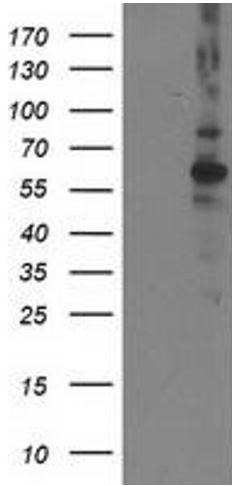
---

Storage: -20 °C

---

Storage Comment: Store at -20°C. Avoid freeze-thaw cycles.

---



### Western Blotting

Image 1.

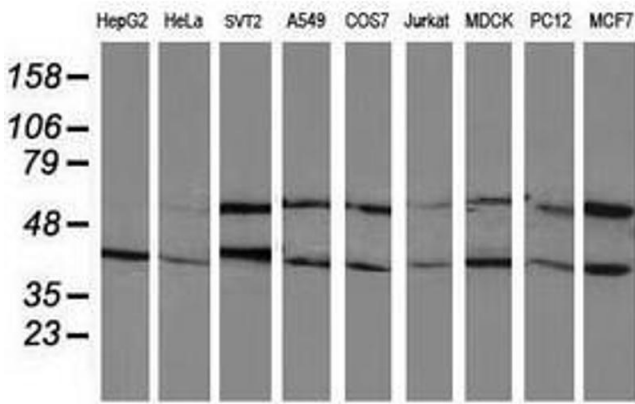


Image 2.

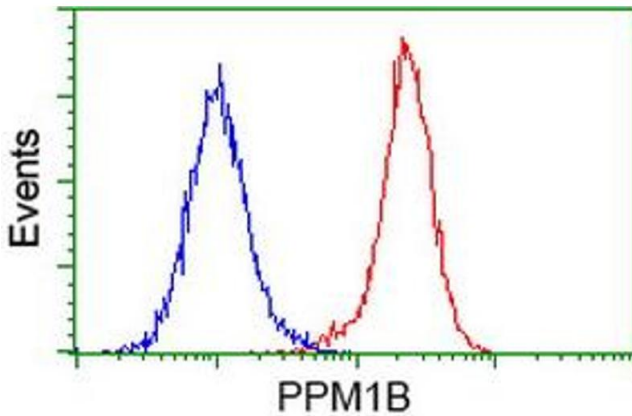


Image 3.

Please check the [product details page](#) for more images. Overall 5 images are available for ABIN1500376.