



Datasheet for ABIN1500389  
**anti-PP5 antibody**



[Go to Product page](#)

12 Images

Overview

Quantity:	100 µL
Target:	PP5 (PPP5C)
Reactivity:	Human
Host:	Mouse
Clonality:	Monoclonal
Application:	Western Blotting (WB), Immunohistochemistry (IHC), Immunofluorescence (IF), Immunohistochemistry (Paraffin-embedded Sections) (IHC (p)), Flow Cytometry (FACS)

Product Details

Immunogen:	Full length human recombinant protein of human PPP5C (NP_006238) produced in HEK293T cell.  Type of Immunogen: Recombinant protein
Clone:	1G2
Isotype:	IgG2a
Specificity:	Human PPP5C / PP5
Purification:	Protein A/G purified

Target Details

Target:	PP5 (PPP5C)
Alternative Name:	PPP5C / PP5 ( <a href="#">PPP5C Products</a> )

## Target Details

---

Background: Name/Gene ID: PPP5C  
Subfamily: Protein Phosphatase - Serine/Threonine other  
Family: Protein Phosphatase  
  
Synonyms: PPP5C, PP-T, Protein phosphatase T, PPP5, PPT, Protein phosphatase 5, PP5

---

Gene ID: 5536

---

NCBI Accession: [NP\\_006238](#)

---

UniProt: [P53041](#)

---

## Application Details

---

Application Notes: Approved: Flo (1:100), IF (1:100), IHC, IHC-P (1:50), WB (1:2000)

Usage: Concentration: 0.5-1.0 mg/mL (Lot dependent)

---

Comment: Target Species of Antibody: Human

---

Restrictions: For Research Use only

---

## Handling

---

Format: Liquid

---

Concentration: Lot specific

---

Buffer: PBS, pH 7.3, 1 % BSA, 50 % glycerol, 0.02 % sodium azide

---

Preservative: Sodium azide

---

Precaution of Use: This product contains Sodium azide: a POISONOUS AND HAZARDOUS SUBSTANCE which should be handled by trained staff only.

---

Handling Advice: Minimize freezing and thawing.

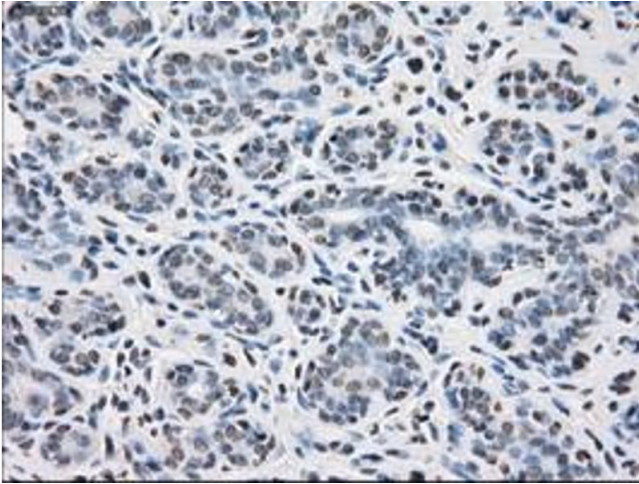
---

Storage: -20 °C

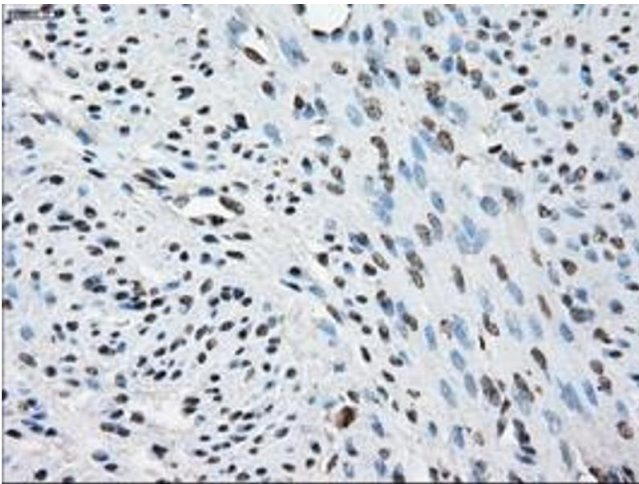
---

Storage Comment: Store at -20°C. Avoid freeze-thaw cycles.

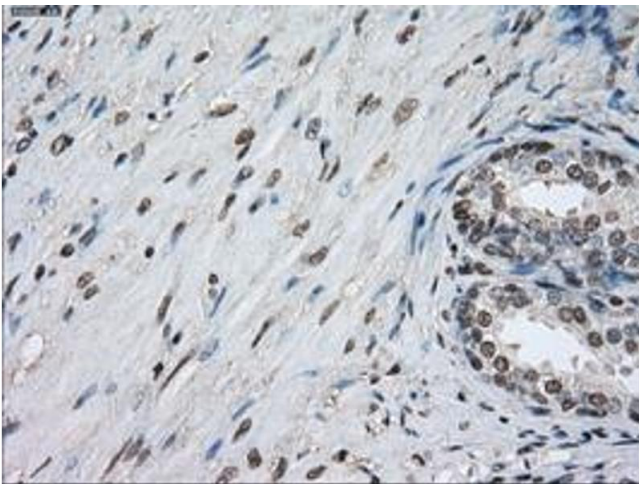
---



**Image 1.**



**Image 2.**



**Image 3.**

Please check the [product details page](#) for more images. Overall 12 images are available for ABIN1500389.