



[Go to Product page](#)

Datasheet for ABIN1500390

anti-PP5 antibody

15 Images

Overview

Quantity:	100 µL
Target:	PP5 (PPP5C)
Reactivity:	Human, Dog
Host:	Mouse
Clonality:	Monoclonal
Application:	Western Blotting (WB), Immunohistochemistry (IHC), Immunofluorescence (IF), Immunohistochemistry (Paraffin-embedded Sections) (IHC (p)), Flow Cytometry (FACS)

Product Details

Immunogen:	Full length human recombinant protein of human PPP5C (NP_006238) produced in HEK293T cell. Type of Immunogen: Recombinant protein
Clone:	5G5
Isotype:	IgG1
Specificity:	Human PPP5C / PP5
Purification:	Protein A/G purified

Target Details

Target:	PP5 (PPP5C)
Alternative Name:	PPP5C / PP5 (PPP5C Products)

Target Details

Background: Name/Gene ID: PPP5C
Subfamily: Protein Phosphatase - Serine/Threonine other
Family: Protein Phosphatase

Synonyms: PPP5C, PP-T, Protein phosphatase T, PPP5, PPT, Protein phosphatase 5, PP5

Gene ID: 5536

NCBI Accession: [NP_006238](#)

UniProt: [P53041](#)

Application Details

Application Notes: Approved: Flo (1:100), IF (1:50 - 1:100), IHC, IHC-P (1:50), WB (1:1000 - 1:2000)

Usage: Concentration: 0.5-1.0 mg/mL (Lot dependent)

Comment: Target Species of Antibody: Human

Restrictions: For Research Use only

Handling

Format: Liquid

Concentration: Lot specific

Buffer: PBS, pH 7.3, 1 % BSA, 50 % glycerol, 0.02 % sodium azide

Preservative: Sodium azide

Precaution of Use: This product contains Sodium azide: a POISONOUS AND HAZARDOUS SUBSTANCE which should be handled by trained staff only.

Handling Advice: Minimize freezing and thawing.

Storage: -20 °C

Storage Comment: Store at -20°C. Avoid freeze-thaw cycles.

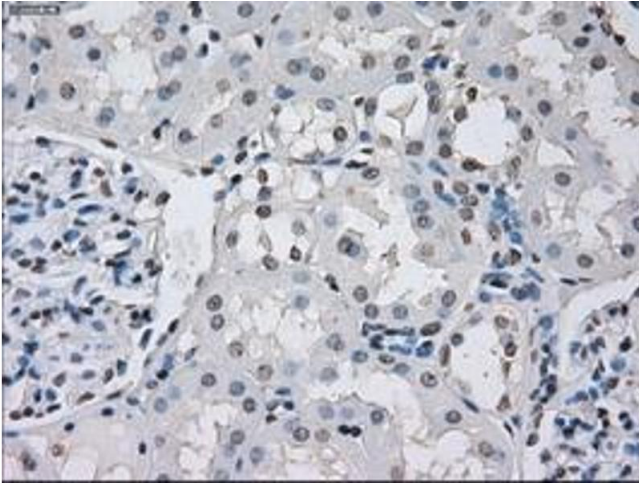


Image 1.

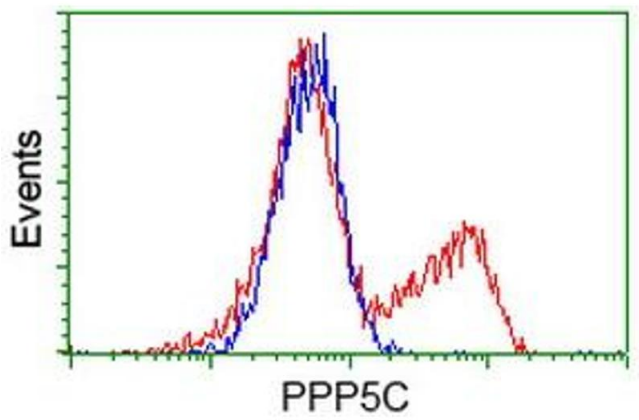


Image 2.

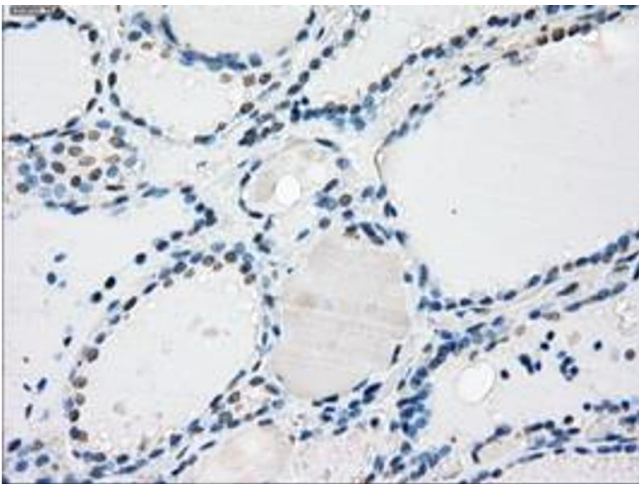


Image 3.

Please check the [product details page](#) for more images. Overall 15 images are available for ABIN1500390.