



[Go to Product page](#)

Datasheet for ABIN1500393

anti-PP5 antibody

6 Images

Overview

Quantity:	100 µL
Target:	PP5 (PPP5C)
Reactivity:	Human, Rat, Dog, Monkey
Host:	Mouse
Clonality:	Monoclonal
Conjugate:	This PP5 antibody is un-conjugated
Application:	Western Blotting (WB), Immunohistochemistry (IHC), Immunohistochemistry (Paraffin-embedded Sections) (IHC (p))

Product Details

Immunogen:	Protein expressed in 293T cell transfected with human PPP5C expression vector. Type of Immunogen: Transfected Cells
Clone:	5A8
Isotype:	IgG1
Specificity:	Human PPP5C / PP5
Purification:	Protein A/G purified

Target Details

Target:	PP5 (PPP5C)
Alternative Name:	PPP5C / PP5 (PPP5C Products)

Target Details

Background: Name/Gene ID: PPP5C
Subfamily: Protein Phosphatase - Serine/Threonine other
Family: Protein Phosphatase
Synonyms: PPP5C, PP-T, Protein phosphatase T, PPP5, PPT, Protein phosphatase 5, PP5

Gene ID: 5536

UniProt: [P53041](#)

Application Details

Application Notes: Approved: IHC, IHC-P (1:50), WB (1:1000)
Usage: Concentration: 0.5-1.0 mg/mL (Lot dependent)

Comment: Target Species of Antibody: Human

Restrictions: For Research Use only

Handling

Format: Liquid

Concentration: Lot specific

Buffer: PBS, pH 7.3, 1 % BSA, 50 % glycerol, 0.02 % sodium azide

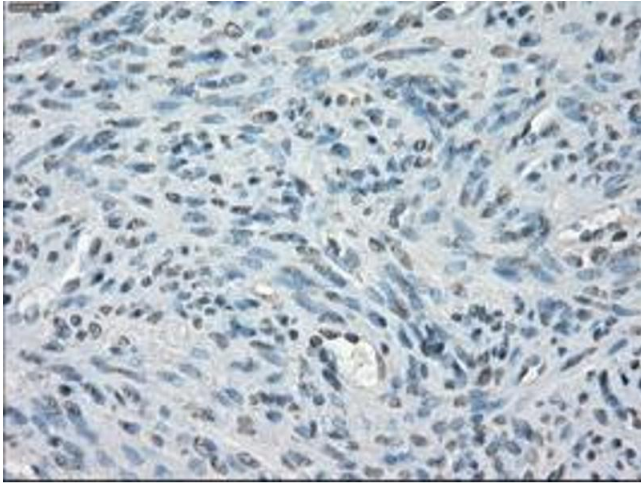
Preservative: Sodium azide

Precaution of Use: This product contains Sodium azide: a POISONOUS AND HAZARDOUS SUBSTANCE which should be handled by trained staff only.

Handling Advice: Minimize freezing and thawing.

Storage: -20 °C

Storage Comment: Store at -20°C. Avoid freeze-thaw cycles.



Immunohistochemistry

Image 1.

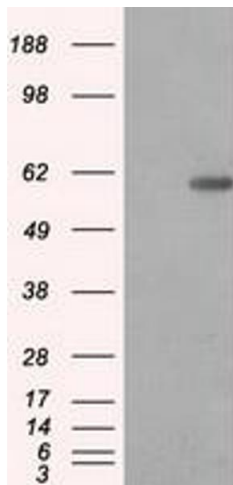


Image 2.

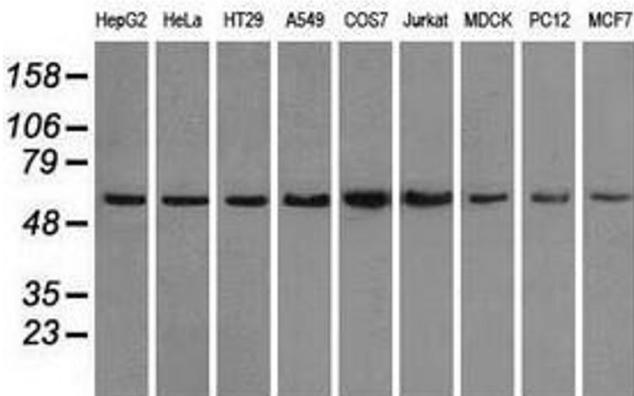


Image 3.

Please check the [product details page](#) for more images. Overall 6 images are available for ABIN1500393.