



[Go to Product page](#)

Datasheet for ABIN1500585  
**anti-RALBP1 antibody**

11 Images

Overview

Quantity:	100 µL
Target:	RALBP1
Reactivity:	Human, Rat, Dog
Host:	Mouse
Clonality:	Monoclonal
Conjugate:	This RALBP1 antibody is un-conjugated
Application:	Western Blotting (WB), Immunohistochemistry (IHC), Immunofluorescence (IF), Flow Cytometry (FACS), Immunohistochemistry (Paraffin-embedded Sections) (IHC (p))

Product Details

Immunogen:	Full length human recombinant protein of human RALBP1 (NP_006779) produced in HEK293T cell.
	Type of Immunogen: Recombinant protein
Clone:	11B2
Isotype:	IgG1
Specificity:	Human RALBP1
Purification:	Protein A/G purified

Target Details

Target:	RALBP1
---------	--------

## Target Details

---

Alternative Name: RIP1 / RALBP1 ([RALBP1 Products](#))

---

Background: Name/Gene ID: RALBP1

Synonyms: RALBP1, 76 kDa Ral-interacting protein, DNP-SG ATPase, Ral-interacting protein 1, RalA-binding protein 1, RIP1, Rlip76 protein, RIP, RLIP1, RalA binding protein 1, RLIP76

---

Gene ID: 10928

---

NCBI Accession: [NP\\_006779](#)

---

## Application Details

---

Application Notes: Approved: Flo (1:100), IF (1:100), IHC, IHC-P (1:50), WB (1:2000)

Usage: Concentration: 0.5-1.0 mg/mL (Lot dependent)

---

Comment: Target Species of Antibody: Human

---

Restrictions: For Research Use only

---

## Handling

---

Format: Liquid

---

Concentration: Lot specific

---

Buffer: PBS, pH 7.3, 1 % BSA, 50 % glycerol, 0.02 % sodium azide

---

Preservative: Sodium azide

---

Precaution of Use: This product contains Sodium azide: a POISONOUS AND HAZARDOUS SUBSTANCE which should be handled by trained staff only.

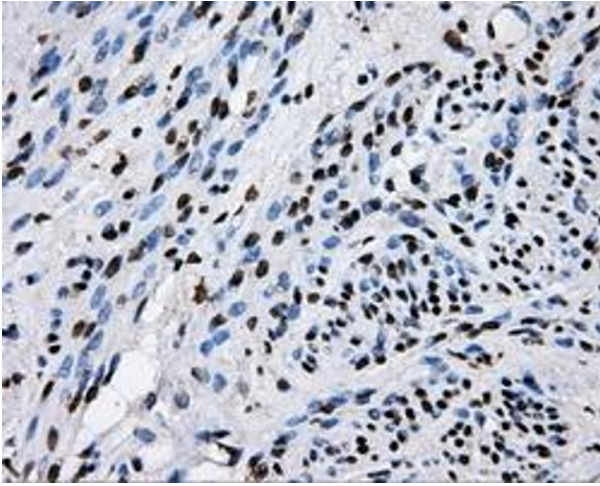
---

Storage: -20 °C

---

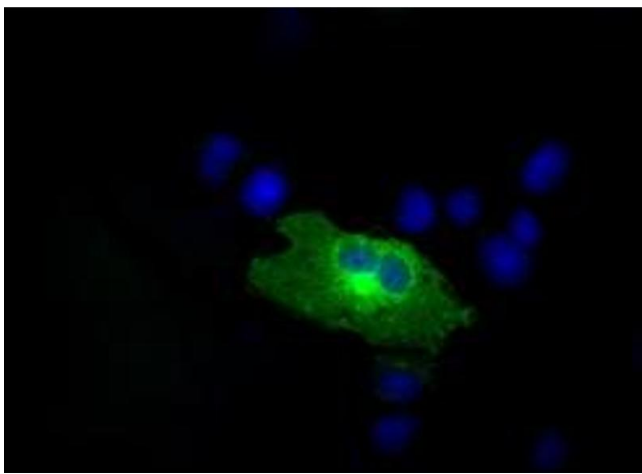
Storage Comment: Store at -20°C. Avoid freeze-thaw cycles.

---

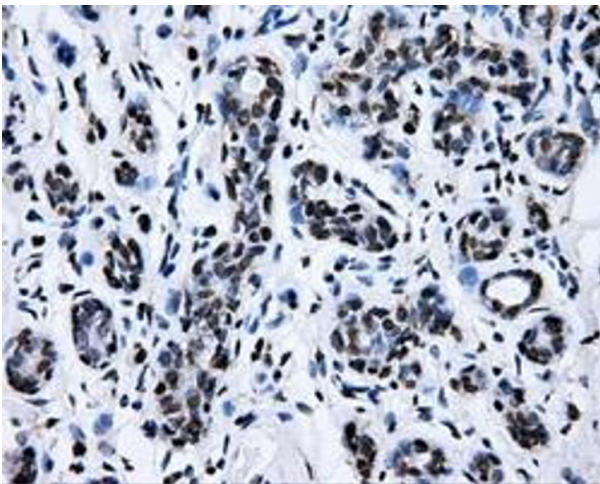


**Immunohistochemistry**

**Image 1.**



**Image 2.**



**Immunohistochemistry**

**Image 3.**

Please check the [product details page](#) for more images. Overall 11 images are available for ABIN1500585.