



Datasheet for ABIN1500596
anti-GTF2F1 antibody



[Go to Product page](#)

4 Images

Overview

Quantity:	100 µL
Target:	GTF2F1
Reactivity:	Human, Mouse, Monkey
Host:	Mouse
Clonality:	Monoclonal
Application:	Western Blotting (WB), Immunofluorescence (IF), Flow Cytometry (FACS)

Product Details

Immunogen:	Full length human recombinant protein of human GTF2F1(NP_002087) produced in HEK293T cell. Type of Immunogen: Recombinant protein
Clone:	2H3
Isotype:	IgG1
Specificity:	Human RAP74 / GTF2F1
Purification:	Protein A/G purified

Target Details

Target:	GTF2F1
Alternative Name:	RAP74 / GTF2F1 (GTF2F1 Products)
Background:	Name/Gene ID: GTF2F1

Target Details

Synonyms: GTF2F1, BTF4, TF2F1, TFIIF, TFIIF-alpha, RAP74

Gene ID: 2962

NCBI Accession: [NP_002087](#)

UniProt: [P35269](#)

Application Details

Application Notes: Approved: Flo (1:100), IF (1:100), WB (1:500 - 1:2000)

Comment: Target Species of Antibody: Human

Restrictions: For Research Use only

Handling

Format: Liquid

Concentration: Lot specific

Buffer: PBS, pH 7.3, 1 % BSA, 50 % glycerol, 0.02 % sodium azide

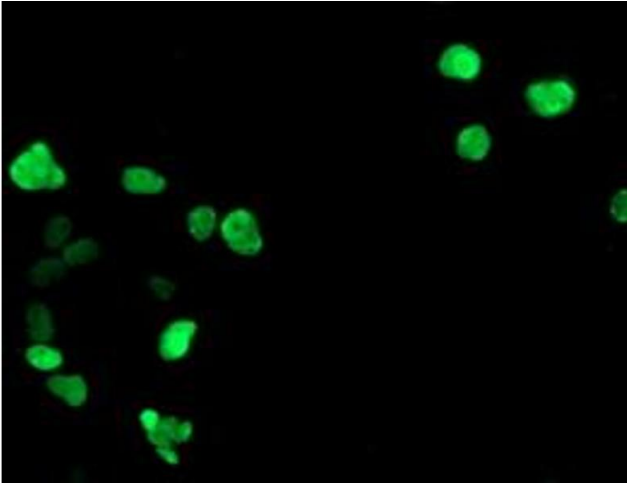
Preservative: Sodium azide

Precaution of Use: This product contains Sodium azide: a POISONOUS AND HAZARDOUS SUBSTANCE which should be handled by trained staff only.

Handling Advice: Minimize freezing and thawing.

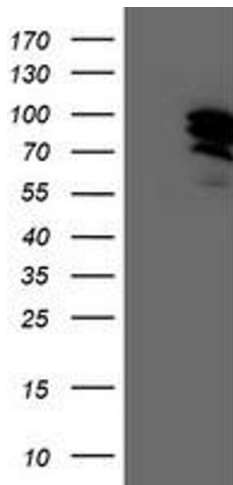
Storage: -20 °C

Storage Comment: Store at -20°C. Avoid freeze-thaw cycles.



Immunofluorescence

Image 1.



Western Blotting

Image 2.

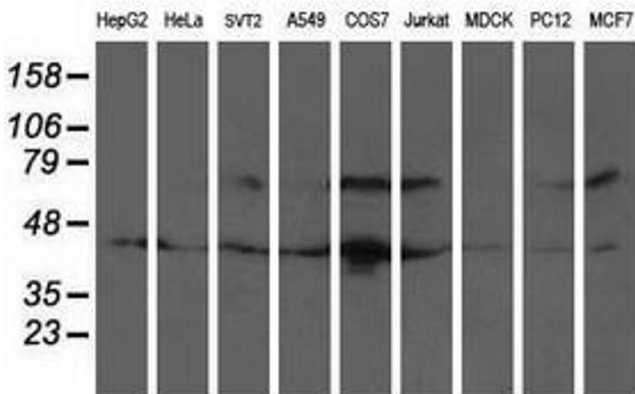


Image 3.

Please check the [product details page](#) for more images. Overall 4 images are available for ABIN1500596.