



Datasheet for ABIN1500597  
**anti-GTF2F1 antibody**



[Go to Product page](#)

6 Images

Overview

Quantity:	100 µL
Target:	GTF2F1
Reactivity:	Human, Dog, Monkey
Host:	Mouse
Clonality:	Monoclonal
Conjugate:	This GTF2F1 antibody is un-conjugated
Application:	Western Blotting (WB), Immunohistochemistry (IHC), Flow Cytometry (FACS), Immunohistochemistry (Paraffin-embedded Sections) (IHC (p))

Product Details

Immunogen:	Full length human recombinant protein of human GTF2F1(NP_002087) produced in HEK293T cell.  Type of Immunogen: Recombinant protein
Clone:	4B10
Isotype:	IgG1
Specificity:	Human RAP74 / GTF2F1
Purification:	Protein A/G purified

Target Details

Target:	GTF2F1
---------	--------

## Target Details

---

Alternative Name: RAP74 / GTF2F1 ([GTF2F1 Products](#))

Background: Name/Gene ID: GTF2F1

Synonyms: GTF2F1, BTF4, TF2F1, TFIIF, TFIIF-alpha, RAP74

Gene ID: 2962

NCBI Accession: [NP\\_002087](#)

## Application Details

---

Application Notes: Approved: Flo (1:100), IHC, IHC-P (1:150), WB (1:500 - 1:2000)

Comment: Target Species of Antibody: Human

Restrictions: For Research Use only

## Handling

---

Format: Liquid

Concentration: Lot specific

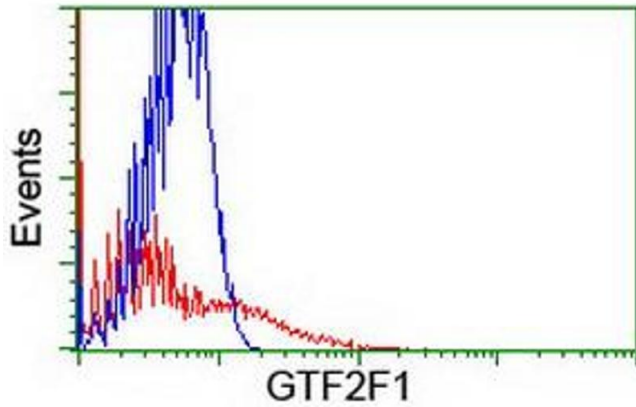
Buffer: PBS, pH 7.3, 1 % BSA, 50 % glycerol, 0.02 % sodium azide

Preservative: Sodium azide

Precaution of Use: This product contains Sodium azide: a POISONOUS AND HAZARDOUS SUBSTANCE which should be handled by trained staff only.

Storage: -20 °C

Storage Comment: Store at -20°C. Avoid freeze-thaw cycles.



### Flow Cytometry

Image 1.

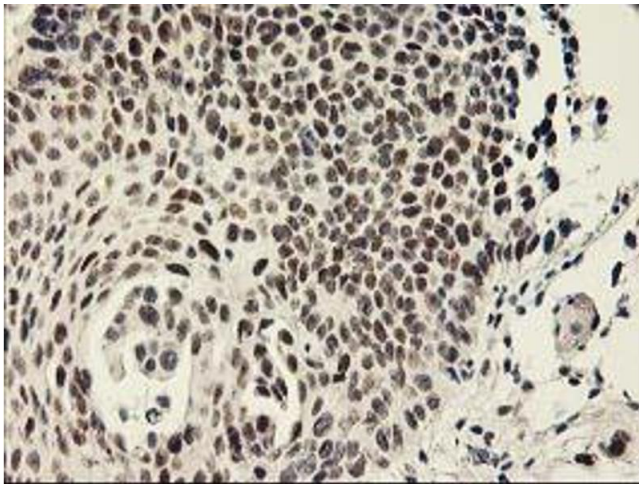
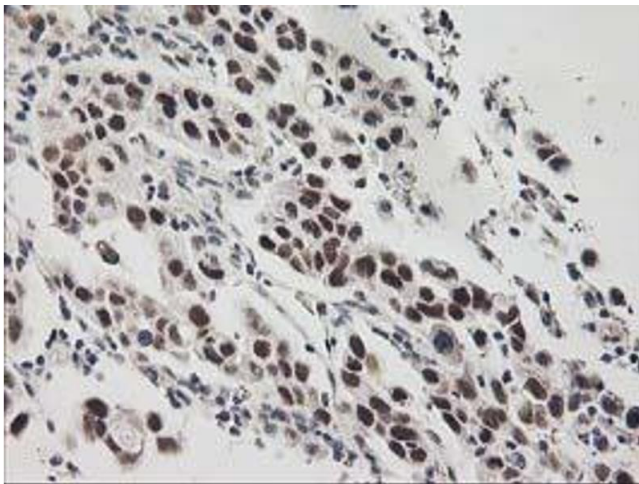


Image 2.



### Immunohistochemistry

Image 3.

Please check the [product details page](#) for more images. Overall 6 images are available for ABIN1500597.