



Datasheet for ABIN1500656  
**anti-RDH14 antibody**



[Go to Product page](#)

5 Images

Overview

Quantity:	100 µL
Target:	RDH14
Reactivity:	Human, Rat
Host:	Mouse
Clonality:	Monoclonal
Conjugate:	This RDH14 antibody is un-conjugated
Application:	Western Blotting (WB), Flow Cytometry (FACS)

Product Details

Immunogen:	Full length human recombinant protein of human RDH14 (NP_065956) produced in HEK293T cell. Type of Immunogen: Recombinant protein
Clone:	1A7
Isotype:	IgG2a
Specificity:	Human RDH14
Purification:	Protein A/G purified

Target Details

Target:	RDH14
Alternative Name:	RDH14 ( <a href="#">RDH14 Products</a> )

## Target Details

---

Background: Name/Gene ID: RDH14

Synonyms: RDH14, Alcohol dehydrogenase PAN2, Pancreas protein 2, SDR7C4, Retinol dehydrogenase 14

Gene ID: 57665

NCBI Accession: [NP\\_065956](#)

## Application Details

---

Application Notes: Approved: Flo (1:100), WB (1:200 - 1:500)

Comment: Target Species of Antibody: Human

Restrictions: For Research Use only

## Handling

---

Format: Liquid

Concentration: Lot specific

Buffer: PBS, pH 7.3, 1 % BSA, 50 % glycerol, 0.02 % sodium azide

Preservative: Sodium azide

Precaution of Use: This product contains Sodium azide: a POISONOUS AND HAZARDOUS SUBSTANCE which should be handled by trained staff only.

Storage: -20 °C

Storage Comment: Store at -20°C. Avoid freeze-thaw cycles.

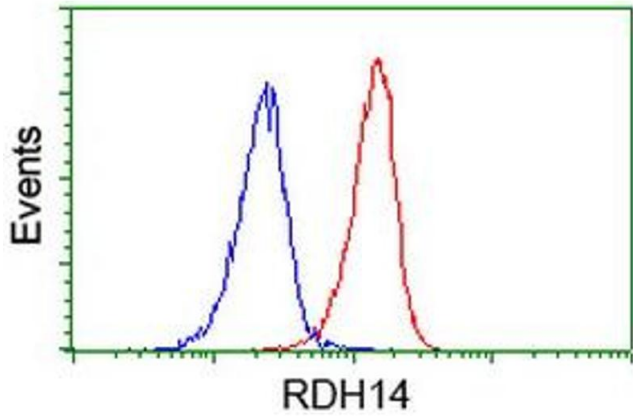
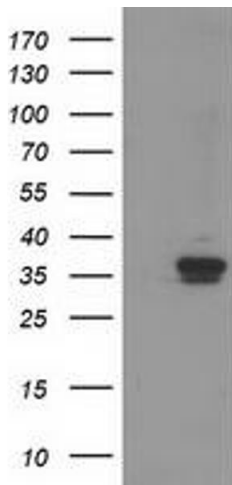


Image 1.



### Western Blotting

Image 2.

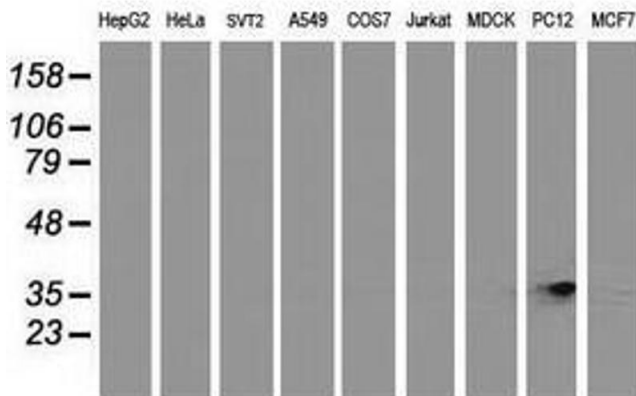


Image 3.

Please check the [product details page](#) for more images. Overall 5 images are available for ABIN1500656.