



[Go to Product page](#)

Datasheet for ABIN1500659

anti-REEP5 antibody

8 Images

Overview

Quantity:	100 µL
Target:	REEP5
Reactivity:	Human
Host:	Mouse
Clonality:	Monoclonal
Application:	Western Blotting (WB), Immunohistochemistry (IHC), Immunohistochemistry (Paraffin-embedded Sections) (IHC (p)), Flow Cytometry (FACS)

Product Details

Immunogen:	Full length human recombinant protein of human REEP5(NP_005660) produced in HEK293T cell. Type of Immunogen: Recombinant protein
Clone:	4D2
Isotype:	IgG2a
Specificity:	Human REEP5 / DP1
Purification:	Protein A/G purified

Target Details

Target:	REEP5
Alternative Name:	REEP5 / DP1 (REEP5 Products)

Target Details

Background:	Name/Gene ID: REEP5 Synonyms: REEP5, C5orf18, D5S346, Deleted in polyposis 1, Deleted in polyposis, Polyposis locus protein 1, Protein TB2, Receptor accessory protein 5, TB2, YOP1, DP1
Gene ID:	7905
NCBI Accession:	NP_005660
Pathways:	SARS-CoV-2 Protein Interactome

Application Details

Application Notes:	Approved: Flo (1:100), IHC, IHC-P (1:150), WB (1:2000)
Comment:	Target Species of Antibody: Human
Restrictions:	For Research Use only

Handling

Format:	Liquid
Concentration:	Lot specific
Buffer:	PBS, pH 7.3, 1 % BSA, 50 % glycerol, 0.02 % sodium azide
Preservative:	Sodium azide
Precaution of Use:	This product contains Sodium azide: a POISONOUS AND HAZARDOUS SUBSTANCE which should be handled by trained staff only.
Storage:	-20 °C
Storage Comment:	Store at -20°C. Avoid freeze-thaw cycles.

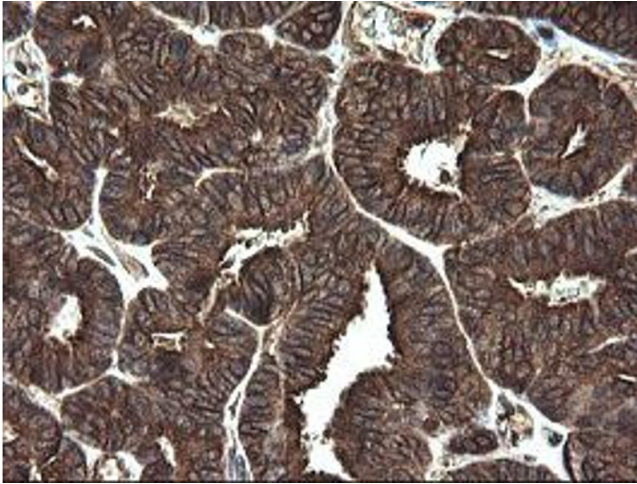


Image 1.

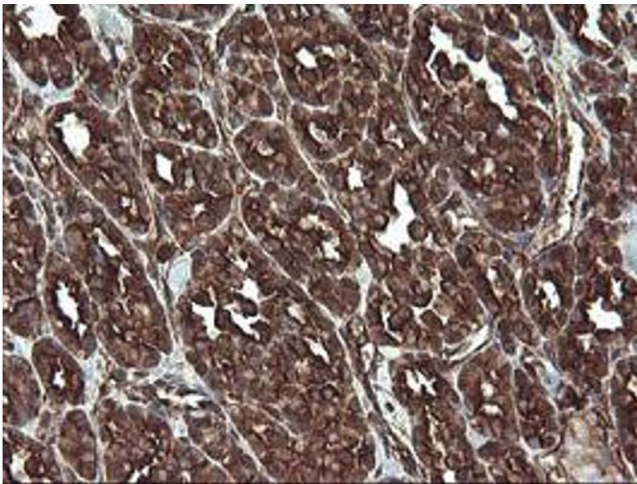


Image 2.

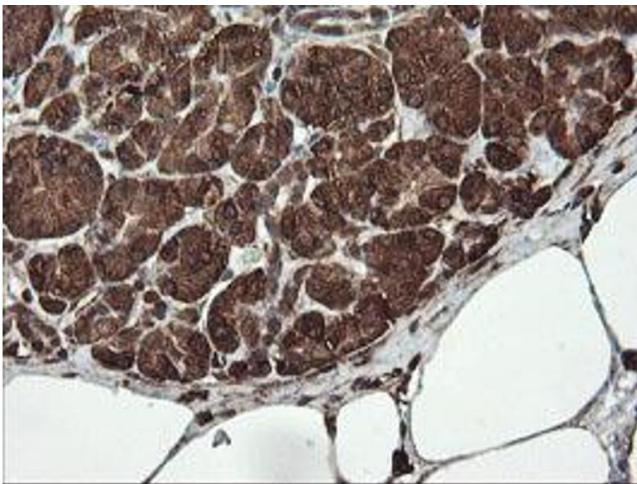


Image 3.

Please check the [product details page](#) for more images. Overall 8 images are available for ABIN1500659.