

Datasheet for ABIN1500736

anti-RPA2 antibody

16 Images



[Go to Product page](#)

Overview

Quantity:	100 µL
Target:	RPA2
Reactivity:	Human, Monkey, Dog
Host:	Mouse
Clonality:	Monoclonal
Application:	Western Blotting (WB), Immunohistochemistry (IHC), Immunofluorescence (IF), Immunoprecipitation (IP), Immunohistochemistry (Paraffin-embedded Sections) (IHC (p)), Flow Cytometry (FACS)

Product Details

Immunogen:	Full length human recombinant protein of human RPA2 (NP_002937) produced in HEK293T cell. Type of Immunogen: Recombinant protein
Clone:	7C12
Isotype:	IgG2a
Specificity:	Human RPA2 / RPA34
Purification:	Protein A/G purified

Target Details

Target:	RPA2
---------	------

Target Details

Alternative Name:	RPA2 / RFA2 / RPA34 (RPA2 Products)
Background:	Name/Gene ID: RPA2 Synonyms: RPA2, RF-A protein 2, RP-A p34, RPA34, Replication protein A2, 32 kDa, RP-A p32, REPA2, Replication factor A protein 2, Replication protein A2 (32kD), RPA32
Gene ID:	6118
NCBI Accession:	NP_002937
UniProt:	P15927
Pathways:	Telomere Maintenance , DNA Damage Repair , Mitotic G1-G1/S Phases , DNA Replication , Synthesis of DNA

Application Details

Application Notes:	Approved: Flo (1:100), IF (1:100), IHC, IHC-P (1:50), IP, WB (1:1000 - 1:2000) Usage: Concentration: 0.5-1.0 mg/mL (Lot dependent)
Comment:	Target Species of Antibody: Human
Restrictions:	For Research Use only

Handling

Format:	Liquid
Concentration:	Lot specific
Buffer:	PBS, pH 7.3, 1 % BSA, 50 % glycerol, 0.02 % sodium azide
Preservative:	Sodium azide
Precaution of Use:	This product contains Sodium azide: a POISONOUS AND HAZARDOUS SUBSTANCE which should be handled by trained staff only.
Handling Advice:	Minimize freezing and thawing.
Storage:	-20 °C
Storage Comment:	Store at -20°C. Avoid freeze-thaw cycles.

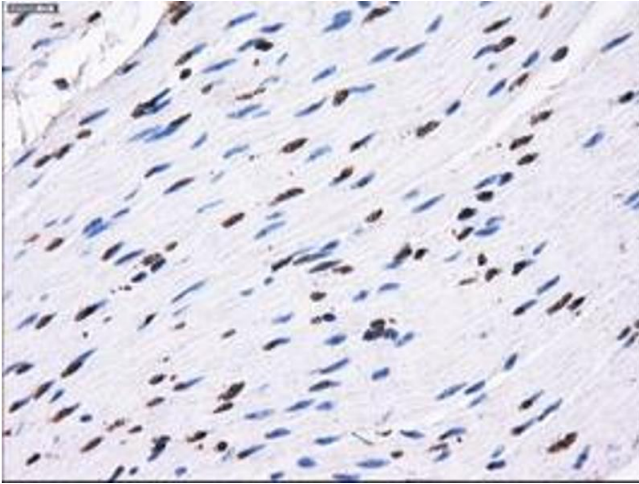


Image 1.

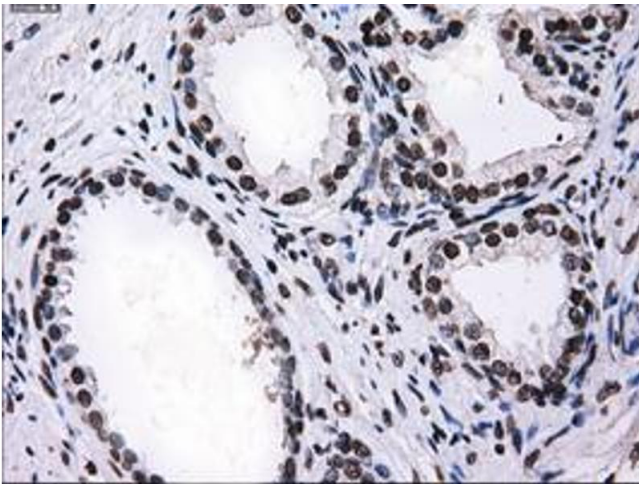


Image 2.

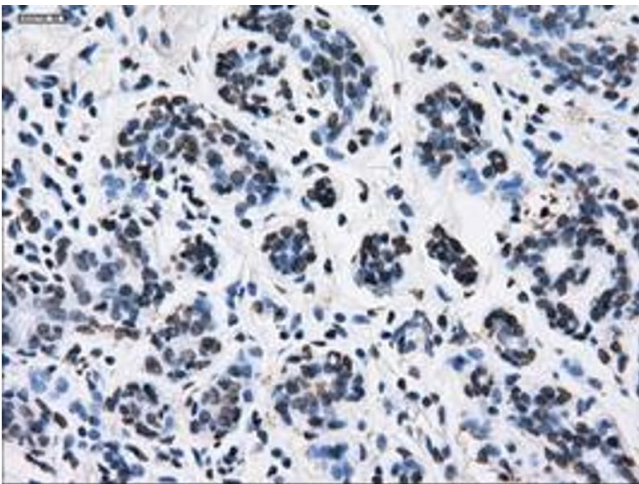


Image 3.

Please check the [product details page](#) for more images. Overall 16 images are available for ABIN1500736.