



[Go to Product page](#)

Datasheet for ABIN1500758
anti-RPRD1A antibody (AA 103-312)

2 Images

Overview

Quantity:	100 µL
Target:	RPRD1A
Binding Specificity:	AA 103-312
Reactivity:	Human
Host:	Rabbit
Clonality:	Polyclonal
Conjugate:	This RPRD1A antibody is un-conjugated
Application:	Western Blotting (WB), Immunofluorescence (IF), Immunocytochemistry (ICC)

Product Details

Immunogen:	Recombinant fragment corresponding to a region within amino acids 103 and 312 of P15RS (SwissProt Q96P16). Percent identity by BLAST analysis: Human (100%), Mouse (98%). Type of Immunogen: Recombinant protein
Isotype:	IgG
Specificity:	Human RPRD1A
Predicted Reactivity:	Percent identity by BLAST analysis: Human (100%) Mouse (98%).
Purification:	Immunoaffinity purified

Target Details

Target:	RPRD1A
---------	--------

Target Details

Alternative Name: [RPRD1A \(RPRD1A Products\)](#)

Background: Name/Gene ID: RPRD1A

Synonyms: RPRD1A, HsT3101, p15INK4B-related protein, p15RS

Gene ID: 55197

UniProt: [Q96P16](#)

Application Details

Application Notes: Approved: ICC (1:100 - 1:1000), IF (1:100 - 1:1000), WB (1:500 - 1:3000)

Usage: Suggested starting dilutions are as follows: Western blot: 1:500-1:3000, ICC/IF: 1:100-1:1000. Not yet tested in other applications. Optimal working dilutions should be determined experimentally by the end user.

Comment: Target Species of Antibody: Human

Restrictions: For Research Use only

Handling

Format: Liquid

Concentration: Lot specific

Buffer: 0.1 M Tris-glycine, pH 7, 20 % Glycerol, 0.01 % Thimerosal

Preservative: Thimerosal (Merthiolate)

Precaution of Use: This product contains Thimerosal (Merthiolate): a POISONOUS AND HAZARDOUS SUBSTANCE which should be handled by trained staff only.

Handling Advice: Avoid freeze-thaw cycles.

Storage: -20 °C

Storage Comment: Aliquot and freeze at -20°C. Avoid freeze-thaw cycles.

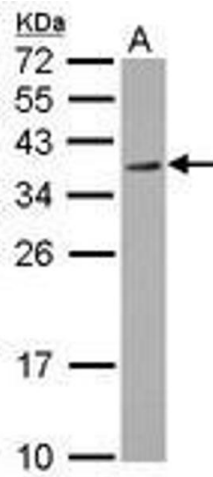


Image 1.

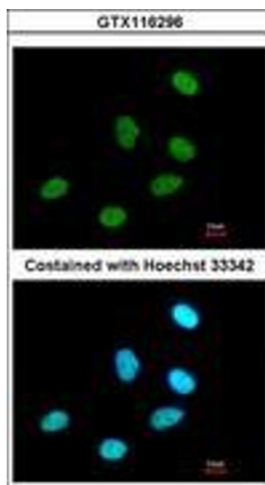


Image 2.