

Datasheet for ABIN1500815
anti-KIT Ligand antibody

5 Images

[Go to Product page](#)

Overview

Quantity:	50 µg
Target:	KIT Ligand (KITLG)
Reactivity:	Human
Host:	Goat
Clonality:	Polyclonal
Conjugate:	This KIT Ligand antibody is un-conjugated
Application:	Western Blotting (WB), ELISA, Immunohistochemistry (IHC), Immunohistochemistry (Paraffin-embedded Sections) (IHC (p)), Neutralization (Neut)

Product Details

Brand:	IHC-plus™
Immunogen:	E.coli derived recombinant Human SCF. Type of Immunogen: Cell extract
Specificity:	Human SCF
Purification:	Immunoaffinity purified

Target Details

Target:	KIT Ligand (KITLG)
Alternative Name:	KITLG / SCF (KITLG Products)
Background:	Name/Gene ID: KITLG

Target Details

Synonyms: KITLG, C-Kit ligand, KIT ligand, Kitl, KL-1, SHEP7, SF, Steel factor, Stem cell factor, SCF, FPH2, Mast cell growth factor, MGF

Gene ID: 4254

UniProt: [P21583](#)

Pathways: [RTK Signaling](#), [Fc-epsilon Receptor Signaling Pathway](#), [EGFR Signaling Pathway](#), [Neurotrophin Signaling Pathway](#)

Application Details

Application Notes: Approved: ELISA (0.5 - 2 µg/mL), IHC, IHC-P (5 µg/mL), Neut (0.01 - 0.01 µg/mL), WB (0.1 - 0.2 µg/mL)

Usage: Immunohistochemistry: LS-B8209 in an IHC-plus antibody, validated by our pathologists for use in IHC against formalin-fixed, paraffin-embedded human tissues (IHC validation procedure). A concentration of 5 µg/mL is recommended. Neutralization: To yield one-half maximal inhibition [ND] of the biological activity of hSCF (100 ng/mL), a concentration of 008-012 µg/mL of this antibody is required. ELISA: To detect hSCF by sandwich ELISA (using 100 µL/well antibody solution) a concentration of 0.5-2 µg/mL of this antibody is required. This antigen affinity purified antibody, in conjunction with Biotinylated Anti-Human SCF (LS-C104803) as a detection antibody, allows the detection of at least 0.2-0.4 ng/well of recombinant hSCF. Western Blot: To detect hSCF by Western Blot analysis this antibody can be used at a concentration of 0.1-0.2 µg/mL. Used in conjunction with compatible secondary reagents the detection limit for recombinant hSCF is 1.5-3 ng/lane, under either reducing or non-reducing conditions.

Comment: Target Species of Antibody: Human

Restrictions: For Research Use only

Handling

Format: Lyophilized

Reconstitution: Sterile water

Concentration: Lot specific

Buffer: Lyophilized from PBS, pH 7.2

Handling

Handling Advice:	Avoid freeze/thaw cycles.
Storage:	4 °C,-20 °C
Storage Comment:	Store Lyophilized at room temperature up to 1 month Reconstituted for up to 2 weeks at 2-8°C. Aliquot and freeze at -20°C for long term storage. Avoid freeze/thaw cycles.

Images

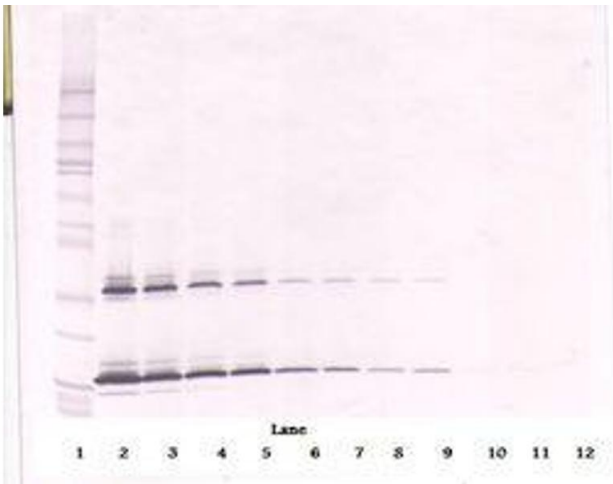


Image 1.

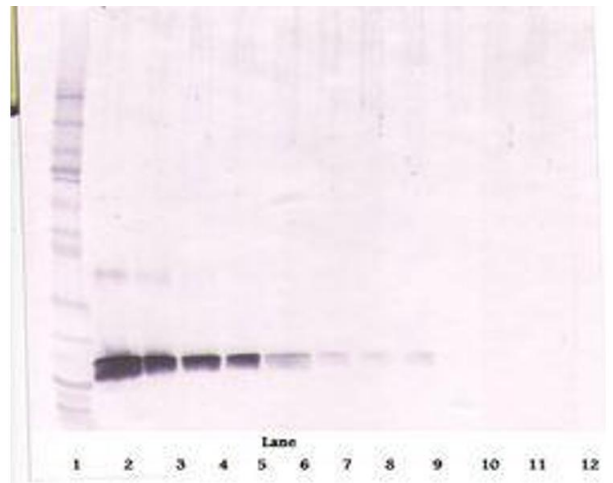
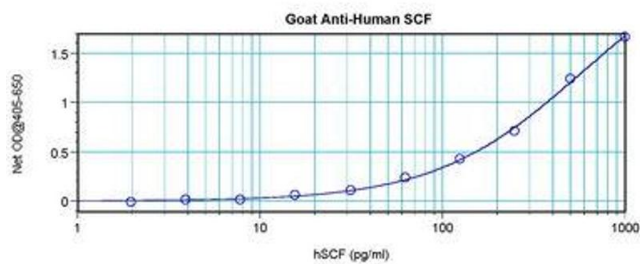


Image 2.

Image 3.



Please check the [product details page](#) for more images. Overall 5 images are available for ABIN1500815.