



Datasheet for ABIN1500820
anti-CLEC11A antibody



[Go to Product page](#)

2 Images

Overview

Quantity:	50 µg
Target:	CLEC11A
Reactivity:	Human
Host:	Goat
Clonality:	Polyclonal
Conjugate:	This CLEC11A antibody is un-conjugated
Application:	Western Blotting (WB), ELISA, Immunohistochemistry (IHC), Immunohistochemistry (Paraffin-embedded Sections) (IHC (p))

Product Details

Brand:	IHC-plus™
Immunogen:	E.coli derived recombinant Human SCGF-beta. Type of Immunogen: Cell extract
Specificity:	Human SCGF-beta
Purification:	Immunoaffinity purified

Target Details

Target:	CLEC11A
Alternative Name:	SCGF (CLEC11A Products)
Background:	Name/Gene ID: CLEC11A

Target Details

Synonyms: CLEC11A, CLECSF3, LSLCL, SCGF, Stem cell growth factor, p47

Gene ID: 6320

UniProt: [Q9Y240](#)

Application Details

Application Notes: Approved: ELISA (0.5 - 2 µg/mL), IHC, IHC-P (5 µg/mL), WB (0.1 - 0.2 µg/mL)

Usage: Immunohistochemistry: LS-B8171 in an IHC-plus antibody, validated by our pathologists for use in IHC against formalin-fixed, paraffin-embedded human tissues (IHC validation procedure). A concentration of 5 µg/mL is recommended. ELISA: To detect Human SCGF-beta by sandwich ELISA (using 100 µL/well antibody solution) a concentration of 0.5-2 µg/mL of this antibody is required. This antigen affinity purified antibody, in conjunction with Biotinylated Anti-Human SCGF-beta (LS-C104793) as a detection antibody, allows the detection of at least 0.2-0.4 ng/well of recombinant Human SCGF-beta. Western Blot: To detect Human SCGF-beta by Western Blot analysis this antibody can be used at a concentration of 0.1-0.2 µg/mL. When used in conjunction with compatible secondary reagents, the detection limit for recombinant Human SCGF-beta is 1.5-3 ng/lane, under either reducing or non-reducing conditions.

Comment: Target Species of Antibody: Human

Restrictions: For Research Use only

Handling

Format: Lyophilized

Reconstitution: Sterile water

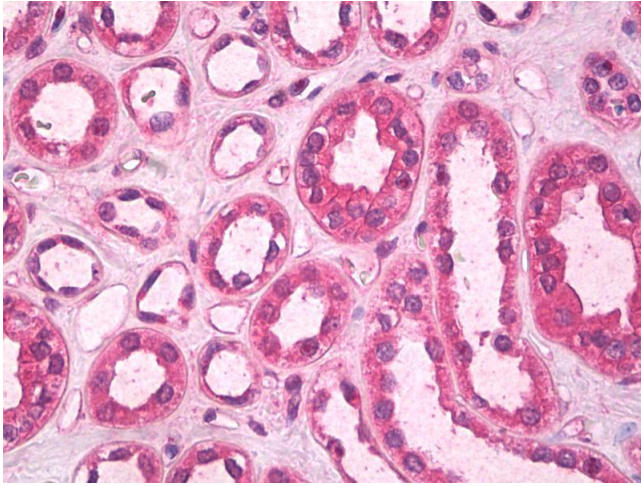
Concentration: Lot specific

Buffer: Lyophilized from PBS, pH 7.2

Handling Advice: Avoid freeze/thaw cycles.

Storage: 4 °C, -20 °C

Storage Comment: Store Lyophilized at room temperature up to 1 month
Reconstituted for up to 2 weeks at 2-8°C. Aliquot and freeze at -20°C for long term storage.
Avoid freeze/thaw cycles.



Immunohistochemistry

Image 1. Anti-SCGF antibody IHC of human kidney, tubules. Immunohistochemistry of formalin-fixed, paraffin-embedded tissue after heat-induced antigen retrieval. Antibody dilution 5 ug/ml.

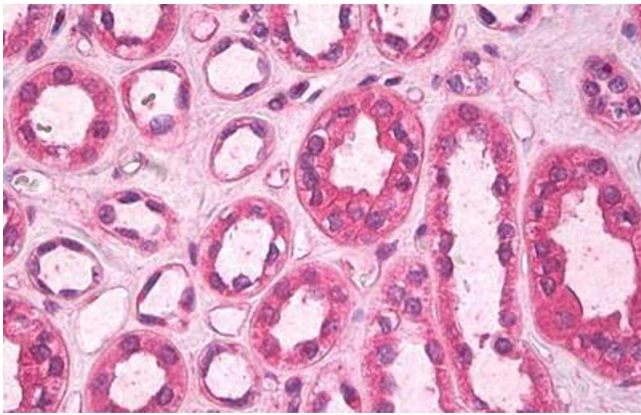


Image 2.