



[Go to Product page](#)

Datasheet for ABIN1500865

## anti-SENP2 antibody

### 2 Images

#### Overview

Quantity:	100 µL
Target:	SENP2
Reactivity:	Human, Rat, Monkey, Dog
Host:	Mouse
Clonality:	Monoclonal
Conjugate:	This SENP2 antibody is un-conjugated
Application:	Western Blotting (WB), Immunofluorescence (IF)

#### Product Details

Immunogen:	Human recombinant protein fragment corresponding to amino acids SENP2(NP_067640) produced in E. coli.  Type of Immunogen: Recombinant protein
Clone:	4B3
Isotype:	IgG1
Specificity:	Human SENP2
Purification:	Protein A/G purified

#### Target Details

Target:	SENP2
Alternative Name:	SENP2 ( <a href="#">SENP2 Products</a> )

## Target Details

---

Background:	Name/Gene ID: SENP2 Subfamily: Cysteine C48 Family: Protease  Synonyms: SENP2, SMT3-specific isopeptidase 2, SMT3IP2, AXAM2, KIAA1331, Sentrin-specific protease 2
Gene ID:	59343
NCBI Accession:	<a href="#">NP_067640</a>
UniProt:	<a href="#">Q9HC62</a>
Pathways:	<a href="#">Chromatin Binding</a>

## Application Details

---

Application Notes:	Approved: IF (1:100), WB (1:2000)
Comment:	Target Species of Antibody: Human
Restrictions:	For Research Use only

## Handling

---

Format:	Liquid
Concentration:	Lot specific
Buffer:	PBS, pH 7.3, 1 % BSA, 50 % glycerol, 0.02 % sodium azide
Preservative:	Sodium azide
Precaution of Use:	This product contains Sodium azide: a POISONOUS AND HAZARDOUS SUBSTANCE which should be handled by trained staff only.
Handling Advice:	Minimize freezing and thawing.
Storage:	-20 °C
Storage Comment:	Store at -20°C. Avoid freeze-thaw cycles.

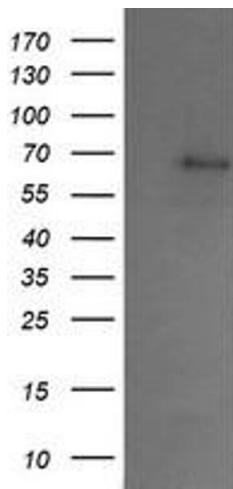


Image 1.



Image 2.