



Datasheet for ABIN1500913
anti-SH2D2A antibody



[Go to Product page](#)

4 Images

Overview

Quantity:	100 µL
Target:	SH2D2A
Reactivity:	Human, Mouse, Monkey
Host:	Mouse
Clonality:	Monoclonal
Conjugate:	This SH2D2A antibody is un-conjugated
Application:	Western Blotting (WB), Flow Cytometry (FACS), Immunofluorescence (IF)

Product Details

Immunogen:	Full length human recombinant protein of human SH2D2A(NP_003966) produced in HEK293T cell. Type of Immunogen: Recombinant protein
Clone:	3C7
Isotype:	IgG1
Specificity:	Human SH2D2A
Purification:	Protein A/G purified

Target Details

Target:	SH2D2A
Alternative Name:	SH2D2A (SH2D2A Products)

Target Details

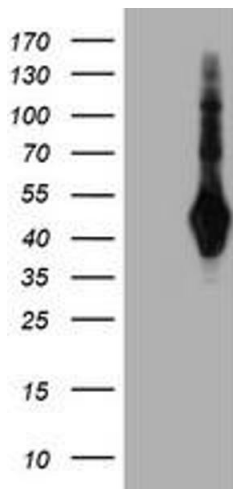
Background:	Name/Gene ID: SH2D2A Synonyms: SH2D2A, F2771, SH2 domain containing 2A, SH2 domain protein 2A, VRAP, TSAD
Gene ID:	9047
NCBI Accession:	NP_003966
Pathways:	Signaling Events mediated by VEGFR1 and VEGFR2 , VEGF Signaling

Application Details

Application Notes:	Approved: Flo (1:100), IF (1:100), WB (1:500 - 1:2000)
Comment:	Target Species of Antibody: Human
Restrictions:	For Research Use only

Handling

Format:	Liquid
Concentration:	Lot specific
Buffer:	PBS, pH 7.3, 1 % BSA, 50 % glycerol, 0.02 % sodium azide
Preservative:	Sodium azide
Precaution of Use:	This product contains Sodium azide: a POISONOUS AND HAZARDOUS SUBSTANCE which should be handled by trained staff only.
Storage:	-20 °C
Storage Comment:	Store at -20°C. Avoid freeze-thaw cycles.



Western Blotting

Image 1.

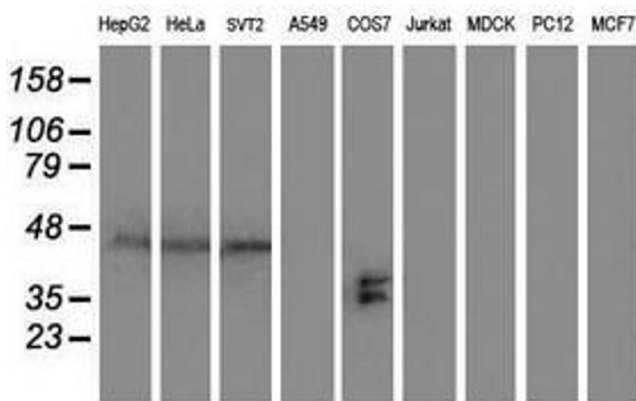
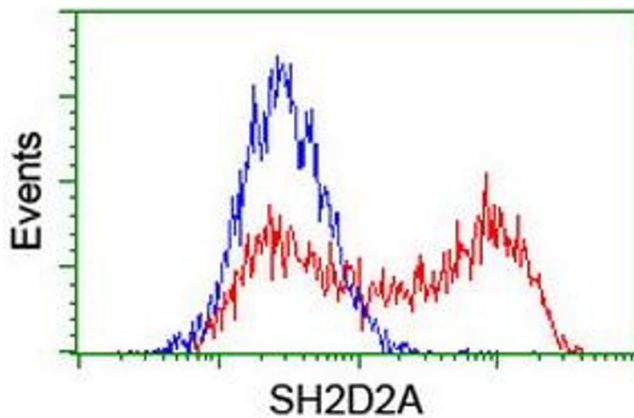


Image 2.



Flow Cytometry

Image 3.

Please check the [product details page](#) for more images. Overall 4 images are available for ABIN1500913.