



[Go to Product page](#)

Datasheet for ABIN1500945
anti-SKP1 antibody (AA 1-110)

1 Image

Overview

Quantity:	100 µL
Target:	SKP1
Binding Specificity:	AA 1-110
Reactivity:	Human
Host:	Rabbit
Clonality:	Polyclonal
Conjugate:	This SKP1 antibody is un-conjugated
Application:	Western Blotting (WB)

Product Details

Immunogen:	Recombinant protein fragment contain a sequence corresponding to a region within amino acids 1 and 110 (P63208) of SKP1. Percent identity by BLAST analysis: Human (100%), Chicken, Monkey, Rat, Xenopus, Bovine (96%), Zebrafish (95%). Type of Immunogen: Recombinant protein
Isotype:	IgG
Specificity:	Human SKP1
Predicted Reactivity:	Percent identity by BLAST analysis: Human (100%) Chicken, Monkey, Rat, Xenopus, Bovine (96%) Zebrafish (95%).
Purification:	Immunoaffinity purified

Target Details

Target:	SKP1
Alternative Name:	SKP1 (SKP1 Products)
Background:	Name/Gene ID: SKP1 Synonyms: SKP1, Cyclin A/CDK2-associated p19, OCP-2, OCP-II, Organ of Corti protein 2, SIII, TCEB1L, Organ of Corti protein II, p19A, SKP1A, EMC19, OCP2, p19skp1
Gene ID:	6500
UniProt:	P63208
Pathways:	Cell Division Cycle , Hedgehog Signaling , Mitotic G1-G1/S Phases

Application Details

Application Notes:	Approved: WB (1:500 - 1:3000) Usage: Suggested starting dilutions are as follows: Western blot: 1:500-1:3000. Not yet tested in other applications. Optimal working dilutions should be determined experimentally by the end user.
Comment:	Target Species of Antibody: Human
Restrictions:	For Research Use only

Handling

Format:	Liquid
Concentration:	Lot specific
Buffer:	PBS, pH 7, 1 % BSA, 20 % Glycerol, 0.01 % Thimerosal
Preservative:	Thimerosal (Merthiolate)
Precaution of Use:	This product contains Thimerosal (Merthiolate): a POISONOUS AND HAZARDOUS SUBSTANCE which should be handled by trained staff only.
Handling Advice:	Avoid freeze-thaw cycles.
Storage:	-20 °C
Storage Comment:	Aliquot and freeze at -20°C. Avoid freeze-thaw cycles.

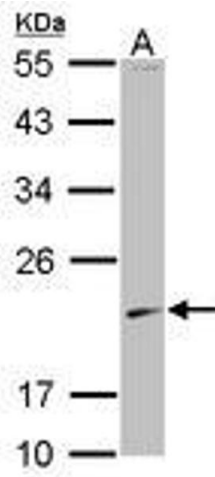


Image 1.