



[Go to Product page](#)

Datasheet for ABIN1501007
anti-SMYD3 antibody (AA 21-416)

2 Images

Overview

Quantity:	100 µL
Target:	SMYD3
Binding Specificity:	AA 21-416
Reactivity:	Human
Host:	Rabbit
Clonality:	Polyclonal
Conjugate:	This SMYD3 antibody is un-conjugated
Application:	Western Blotting (WB), Immunohistochemistry (IHC), Immunohistochemistry (Paraffin-embedded Sections) (IHC (p))

Product Details

Immunogen:	Recombinant protein fragment contain a sequence corresponding to a region within amino acids 21 and 416 of SMYD3. Percent identity by BLAST analysis: Human (100%), Rat (95%), Mouse (93%), Bovine (83%). Type of Immunogen: Recombinant protein
Isotype:	IgG
Specificity:	Human SMYD3
Predicted Reactivity:	Percent identity by BLAST analysis: Human (100%) Rat (95%) Mouse (93%) Bovine (83%).
Purification:	Immunoaffinity purified

Target Details

Target:	SMYD3
Alternative Name:	SMYD3 (SMYD3 Products)
Background:	Name/Gene ID: SMYD3 Synonyms: SMYD3, BA74P14.1, BA74P14.1 (novel protein), KMT3E, ZMYND1, ZNFN3A1
Gene ID:	64754
UniProt:	Q9H7B4

Application Details

Application Notes:	Approved: IHC, IHC-P (1:100 - 1:1000), WB (1:500 - 1:3000) Usage: Suggested starting dilutions are as follows: Western blot: 1:500-1:3000, IHC-Paraffin: 1:100-1:1000 [suggested antigen retrieval using heat mediated 10 mM Citrate buffer (pH 6.0) or Tris-EDTA buffer (pH 8.0)]. Not yet tested in other applications. Optimal working dilutions should be determined experimentally by the end user.
Comment:	Target Species of Antibody: Human
Restrictions:	For Research Use only

Handling

Format:	Liquid
Concentration:	Lot specific
Buffer:	PBS, pH 7, 1 % BSA, 20 % Glycerol, 0.01 % Thimerosal
Preservative:	Thimerosal (Merthiolate)
Precaution of Use:	This product contains Thimerosal (Merthiolate): a POISONOUS AND HAZARDOUS SUBSTANCE which should be handled by trained staff only.
Handling Advice:	Avoid freeze-thaw cycles.
Storage:	-20 °C
Storage Comment:	Aliquot and freeze at -20°C. Avoid freeze-thaw cycles.

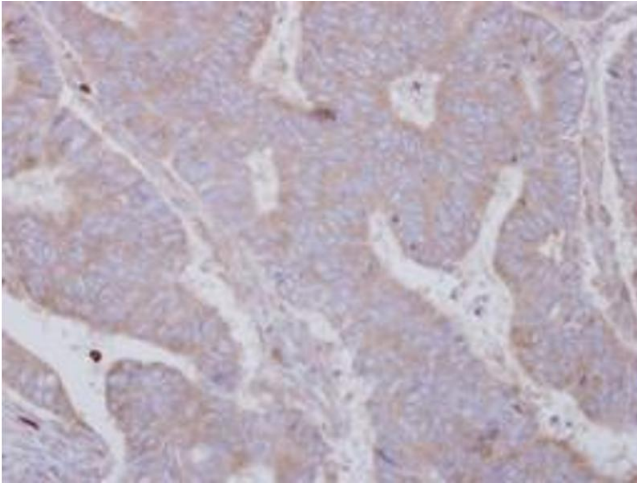


Image 1.

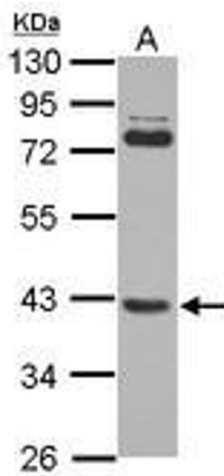


Image 2.