

Datasheet for ABIN1501065

**anti-SESTD1 antibody**[Go to Product page](#)**4** Images

## Overview

Quantity:	100 µL
Target:	SESTD1
Reactivity:	Human, Mouse, Dog, Monkey
Host:	Mouse
Clonality:	Monoclonal
Application:	Western Blotting (WB), Immunohistochemistry (IHC), Immunofluorescence (IF), Immunohistochemistry (Paraffin-embedded Sections) (IHC (p))

## Product Details

Immunogen:	Full length human recombinant protein of human SESTD1(NP_835224) produced in HEK293T cell.  Type of Immunogen: Recombinant protein
Clone:	7G4
Isotype:	IgG2b
Specificity:	Human SOLO / SESTD1
Purification:	Protein A/G purified

## Target Details

Target:	SESTD1
Alternative Name:	SOLO / SESTD1 ( <a href="#">SESTD1 Products</a> )

## Target Details

---

Background:	Name/Gene ID: SESTD1  Synonyms: SESTD1, Protein Solo, SEC14 and spectrin domains 1, SOLO
Gene ID:	91404
NCBI Accession:	<a href="#">NP_835224</a>

## Application Details

---

Application Notes:	Approved: IF (1:100), IHC, IHC-P (1:150), WB (1:200 - 1:2000)
Comment:	Target Species of Antibody: Human
Restrictions:	For Research Use only

## Handling

---

Format:	Liquid
Concentration:	Lot specific
Buffer:	PBS, pH 7.3, 1 % BSA, 50 % glycerol, 0.02 % sodium azide
Preservative:	Sodium azide
Precaution of Use:	This product contains Sodium azide: a POISONOUS AND HAZARDOUS SUBSTANCE which should be handled by trained staff only.
Storage:	-20 °C
Storage Comment:	Store at -20°C. Avoid freeze-thaw cycles.

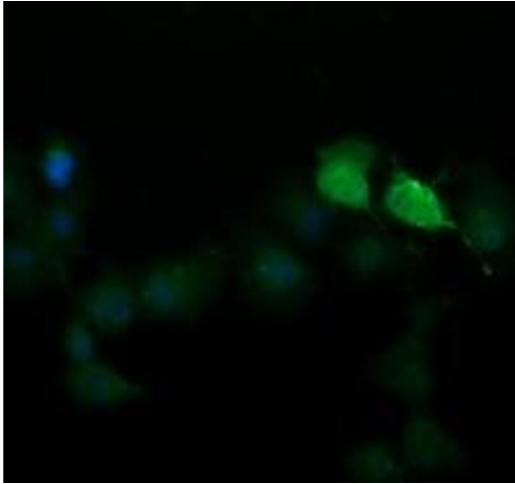


Image 1.

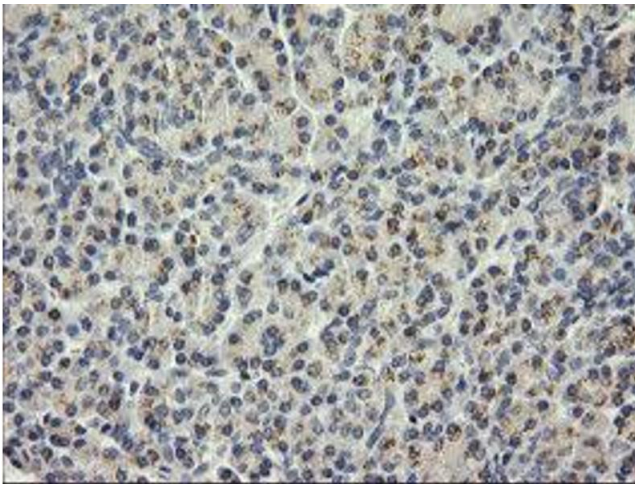


Image 2.

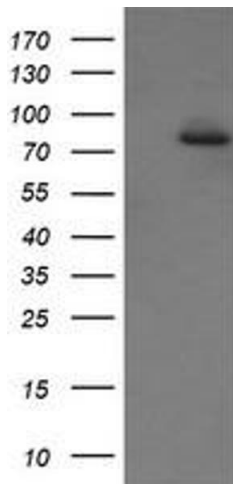


Image 3.

Please check the [product details page](#) for more images. Overall 4 images are available for ABIN1501065.