

Datasheet for ABIN1501149

## anti-SSR1 antibody

### 9 Images



[Go to Product page](#)

### Overview

Quantity:	100 µL
Target:	SSR1
Reactivity:	Human, Dog, Monkey
Host:	Mouse
Clonality:	Monoclonal
Conjugate:	This SSR1 antibody is un-conjugated
Application:	Western Blotting (WB), Immunohistochemistry (IHC), Flow Cytometry (FACS), Immunofluorescence (IF), Immunohistochemistry (Paraffin-embedded Sections) (IHC (p))

### Product Details

Immunogen:	Full length human recombinant protein of human SSR1(NP_003135) produced in HEK293T cell. Type of Immunogen: Recombinant protein
Clone:	3E5
Isotype:	IgG1
Specificity:	Human SSR1
Purification:	Protein A/G purified

### Target Details

Target:	SSR1
Alternative Name:	SSR1 ( <a href="#">SSR1 Products</a> )

## Target Details

---

Background:	Name/Gene ID: SSR1  Synonyms: SSR1, Signal sequence receptor, SSR-alpha, TRAP-alpha, TRAP alpha, Ssr, SSR alpha subunit, Trap-a, TRAPA
Gene ID:	6745
NCBI Accession:	<a href="#">NP_003135</a>
UniProt:	<a href="#">P43307</a>
Pathways:	<a href="#">ER-Nucleus Signaling</a>

## Application Details

---

Application Notes:	Approved: Flo (1:100), IF (1:100), IHC, IHC-P (1:150), WB (1:500 - 1:2000)
Comment:	Target Species of Antibody: Human
Restrictions:	For Research Use only

## Handling

---

Format:	Liquid
Concentration:	Lot specific
Buffer:	PBS, pH 7.3, 1 % BSA, 50 % glycerol, 0.02 % sodium azide
Preservative:	Sodium azide
Precaution of Use:	This product contains Sodium azide: a POISONOUS AND HAZARDOUS SUBSTANCE which should be handled by trained staff only.
Handling Advice:	Minimize freezing and thawing.
Storage:	-20 °C
Storage Comment:	Store at -20°C. Avoid freeze-thaw cycles.

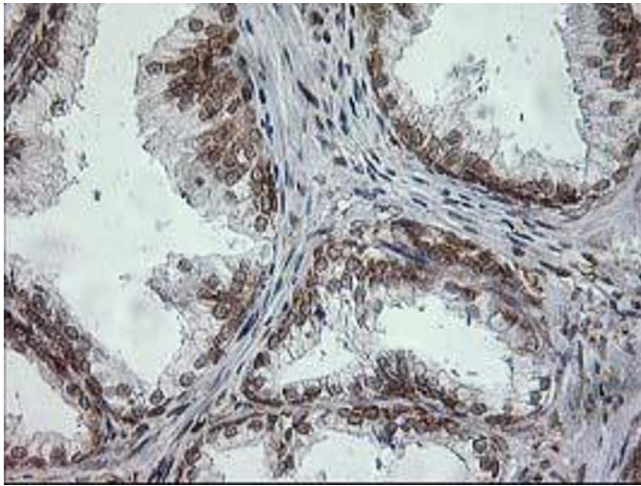


Image 1.

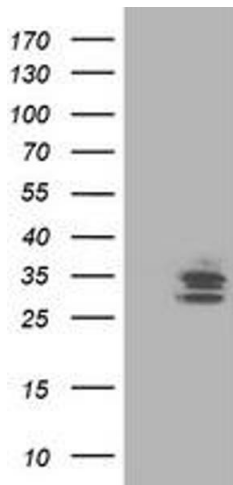


Image 2.

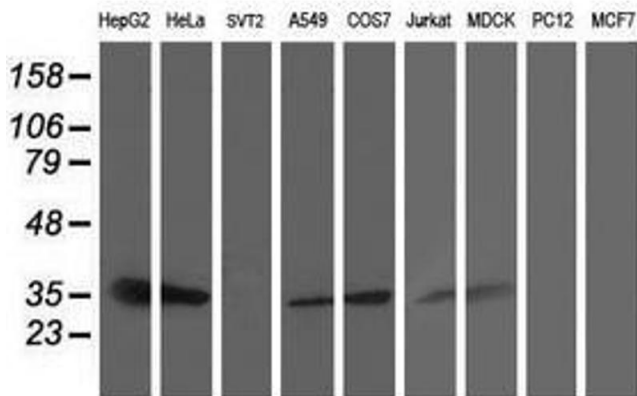


Image 3.

Please check the [product details page](#) for more images. Overall 9 images are available for ABIN1501149.