



[Go to Product page](#)

Datasheet for ABIN1501321  
**anti-TBCB antibody (AA 1-219)**

1 Image

Overview

Quantity:	100 µL
Target:	TBCB
Binding Specificity:	AA 1-219
Reactivity:	Human
Host:	Rabbit
Clonality:	Polyclonal
Conjugate:	This TBCB antibody is un-conjugated
Application:	Western Blotting (WB)

Product Details

Immunogen:	Recombinant fragment corresponding to a region within amino acids 1 and 219 of CKAP1 (SwissProt Q99426). Percent identity by BLAST analysis: Human (100%), Mouse, Rat (87%), Bovine (85%).  Type of Immunogen: Recombinant protein
Isotype:	IgG
Specificity:	Human TBCB / CKAP1
Predicted Reactivity:	Percent identity by BLAST analysis: Human (100%) Mouse, Rat (87%) Bovine (85%).
Purification:	Immunoaffinity purified

## Target Details

---

Target:	TBCB
Alternative Name:	TBCB / CKAP1 ( <a href="#">TBCB Products</a> )
Background:	Name/Gene ID: TBCB  Synonyms: TBCB, CKAP1, CKAPI, Tubulin folding cofactor B, Tubulin-folding cofactor B, CG22, Tubulin-specific chaperone B
Gene ID:	1155
UniProt:	<a href="#">Q99426</a>

## Application Details

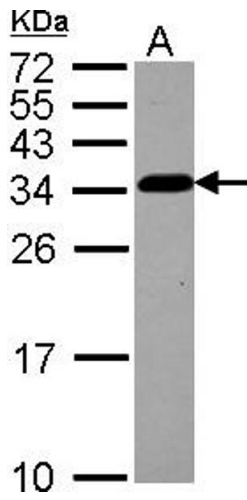
---

Application Notes:	Approved: WB (1:500 - 1:3000)  Usage: Suggested starting dilutions are as follows: Western blot: 1:500-1:3000. Not yet tested in other applications. Optimal working dilutions should be determined experimentally by the end user.
Comment:	Target Species of Antibody: Human
Restrictions:	For Research Use only

## Handling

---

Format:	Liquid
Concentration:	Lot specific
Buffer:	0.1 M Tris-glycine, pH 7, 20 % Glycerol, 0.01 % Thimerosal
Preservative:	Thimerosal (Merthiolate)
Precaution of Use:	This product contains Thimerosal (Merthiolate): a POISONOUS AND HAZARDOUS SUBSTANCE which should be handled by trained staff only.
Handling Advice:	Avoid freeze-thaw cycles.
Storage:	-20 °C
Storage Comment:	Aliquot and freeze at -20°C. Avoid freeze-thaw cycles.



### Western Blotting

Image 1.