



Datasheet for ABIN1501358
anti-TFF1 antibody (AA 1-84)



[Go to Product page](#)

3 Images

Overview

Quantity:	100 µL
Target:	TFF1
Binding Specificity:	AA 1-84
Reactivity:	Human
Host:	Rabbit
Clonality:	Polyclonal
Application:	Western Blotting (WB), Immunohistochemistry (IHC), Immunofluorescence (IF), Immunohistochemistry (Paraffin-embedded Sections) (IHC (p)), Immunocytochemistry (ICC)

Product Details

Immunogen:	Recombinant fragment corresponding to a region within amino acids 1 and 84 of Trefoil factor 1 (SwissProt P04155). Percent identity by BLAST analysis: Type of Immunogen: Recombinant protein
Isotype:	IgG
Specificity:	Human TFF1
Predicted Reactivity:	Percent identity by BLAST analysis:
Purification:	Immunoaffinity purified

Target Details

Target:	TFF1
---------	------

Target Details

Alternative Name: TFF1 / PS2 ([TFF1 Products](#))

Background: Name/Gene ID: TFF1

Synonyms: TFF1, BCEI, D21S21, HPS2, PNR-2, Polypeptide P1.A, Protein pS2, PS2, HP1.A, Trefoil factor 1

Gene ID: 7031

UniProt: [P04155](#)

Pathways: [EGFR Signaling Pathway](#)

Application Details

Application Notes: Approved: ICC (1:100 - 1:1000), IF (1:100 - 1:1000), IHC, IHC-P (1:100 - 1:1000), WB (1:500 - 1:3000)

Usage: Suggested starting dilutions are as follows: Western blot: 1:500-1:3000, IHC-Paraffin: 1:100-1:1000, ICC/IF: 1:100-1:1000. Not yet tested in other applications. Optimal working dilutions should be determined experimentally by the end user.

Comment: Target Species of Antibody: Human

Restrictions: For Research Use only

Handling

Format: Liquid

Concentration: Lot specific

Buffer: 0.1 M Tris-glycine, pH 7, 20 % Glycerol, 0.01 % Thimerosal

Preservative: Thimerosal (Merthiolate)

Precaution of Use: This product contains Thimerosal (Merthiolate): a POISONOUS AND HAZARDOUS SUBSTANCE which should be handled by trained staff only.

Handling Advice: Avoid freeze-thaw cycles.

Storage: -20 °C

Storage Comment: Aliquot and freeze at -20°C. Avoid freeze-thaw cycles.

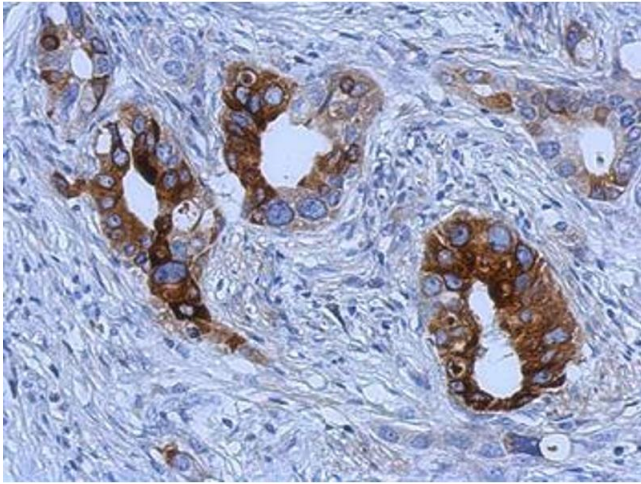


Image 1.

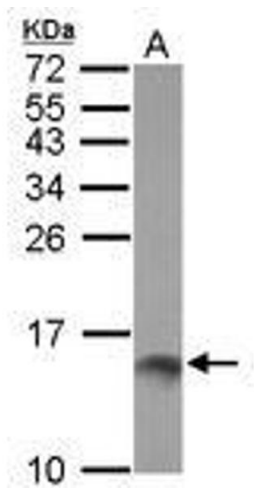


Image 2.



Image 3.