

Datasheet for ABIN1501374

anti-THAP6 antibody

2 Images



[Go to Product page](#)

Overview

Quantity:	100 µL
Target:	THAP6
Reactivity:	Human
Host:	Mouse
Clonality:	Monoclonal
Application:	Western Blotting (WB), Immunohistochemistry (IHC), Immunohistochemistry (Paraffin-embedded Sections) (IHC (p))

Product Details

Immunogen:	Full length human recombinant protein of human THAP6 (NP_653322) produced in E. coli. Type of Immunogen: Recombinant protein
Clone:	5G2
Isotype:	IgG2a
Specificity:	Human THAP6
Purification:	Protein A/G purified

Target Details

Target:	THAP6
Alternative Name:	THAP6 (THAP6 Products)
Background:	Name/Gene ID: THAP6

Target Details

Synonyms: THAP6, THAP domain containing 6

Gene ID: 152815

NCBI Accession: [NP_653322](#)

UniProt: [Q8TBB0](#)

Application Details

Application Notes: Approved: IHC, IHC-P (1:150), WB (1:2000)

Comment: Target Species of Antibody: Human

Restrictions: For Research Use only

Handling

Format: Liquid

Concentration: Lot specific

Buffer: PBS, pH 7.3, 1 % BSA, 50 % glycerol, 0.02 % sodium azide

Preservative: Sodium azide

Precaution of Use: This product contains Sodium azide: a POISONOUS AND HAZARDOUS SUBSTANCE which should be handled by trained staff only.

Handling Advice: Minimize freezing and thawing.

Storage: -20 °C

Storage Comment: Store at -20°C. Avoid freeze-thaw cycles.

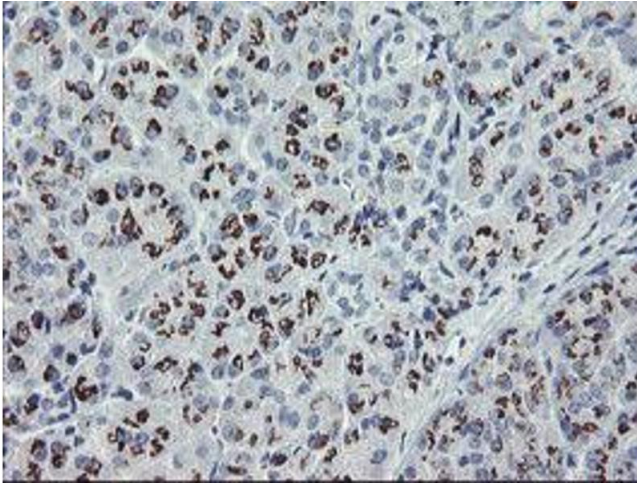


Image 1.

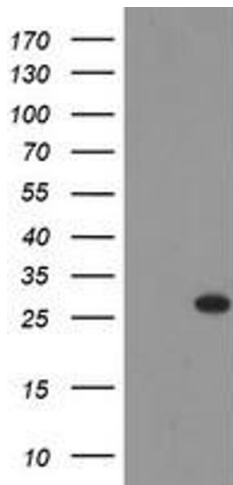


Image 2.