



[Go to Product page](#)

Datasheet for ABIN1501385  
**anti-THUMPD2 antibody (AA 246-491)**

2 Images

Overview

Quantity:	100 µL
Target:	THUMPD2
Binding Specificity:	AA 246-491
Reactivity:	Human
Host:	Rabbit
Clonality:	Polyclonal
Application:	Western Blotting (WB), Immunohistochemistry (Paraffin-embedded Sections) (IHC (p)), Immunohistochemistry (IHC)

Product Details

Immunogen:	Recombinant fragment corresponding to a region within amino acids 246 and 491 of THUMPD2 (SwissProt Q9BTF0). Percent identity by BLAST analysis:  Type of Immunogen: Recombinant protein
Isotype:	IgG
Specificity:	Human THUMPD2
Predicted Reactivity:	Percent identity by BLAST analysis:
Purification:	Immunoaffinity purified

Target Details

Target:	THUMPD2
---------	---------

## Target Details

---

Alternative Name: THUMPD2 ([THUMPD2 Products](#))

Background: Name/Gene ID: THUMPD2

Synonyms: THUMPD2, C2orf8, THUMP domain containing 2

Gene ID: 80745

## Application Details

---

Application Notes: Approved: IHC, IHC-P (1:100 - 1:1000), WB (1:1000 - 1:10000)

Usage: Suggested starting dilutions are as follows: Western blot: 1:1000-1:10000, IHC-Paraffin: 1:100-1:1000 [suggested antigen retrieval using heat mediated 10 mM Citrate buffer ( pH 6.0) or Tris-EDTA buffer ( pH 8.0)]. Not yet tested in other applications. Optimal working dilutions should be determined experimentally by the end user.

Comment: Target Species of Antibody: Human

Restrictions: For Research Use only

## Handling

---

Format: Liquid

Concentration: Lot specific

Buffer: 0.1 M Tris-glycine, pH 7, 20 % Glycerol, 0.01 % Thimerosal

Preservative: Thimerosal (Merthiolate)

Precaution of Use: This product contains Thimerosal (Merthiolate): a POISONOUS AND HAZARDOUS SUBSTANCE which should be handled by trained staff only.

Handling Advice: Avoid freeze-thaw cycles.

Storage: -20 °C

Storage Comment: Aliquot and freeze at -20°C. Avoid freeze-thaw cycles.

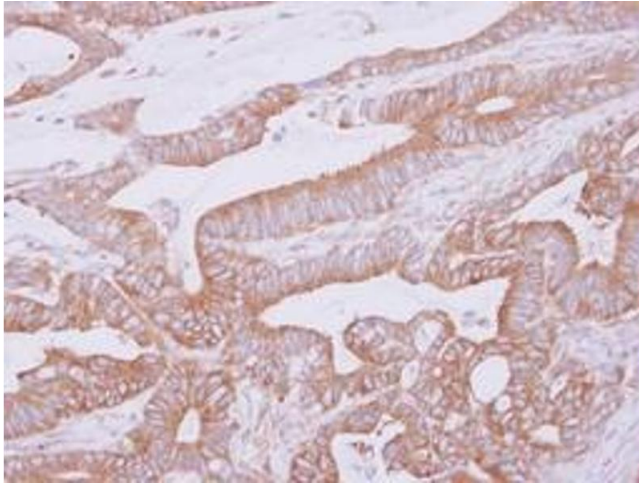


Image 1.

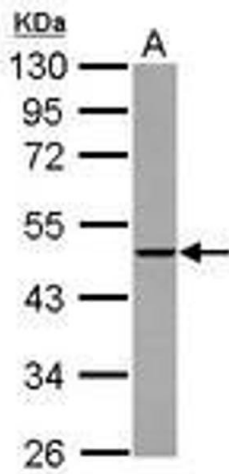


Image 2.