



Datasheet for ABIN1501422  
**anti-TMEM100 antibody**



[Go to Product page](#)

7 Images

Overview

Quantity:	100 µL
Target:	TMEM100
Reactivity:	Human, Dog, Monkey
Host:	Mouse
Clonality:	Monoclonal
Conjugate:	This TMEM100 antibody is un-conjugated
Application:	Western Blotting (WB), Immunohistochemistry (IHC), Immunohistochemistry (Paraffin-embedded Sections) (IHC (p))

Product Details

Immunogen:	Protein expressed in 293T cell transfected with human TMEM100 expression vector. Type of Immunogen: Transfected Cells
Clone:	1F8
Isotype:	IgG2b
Specificity:	Human TMEM100
Purification:	Protein A/G purified

Target Details

Target:	TMEM100
Alternative Name:	TMEM100 ( <a href="#">TMEM100 Products</a> )

## Target Details

---

Background: Name/Gene ID: TMEM100  
Synonyms: TMEM100, Transmembrane protein 100

---

Gene ID: 55273

---

## Application Details

---

Application Notes: Approved: IHC, IHC-P (1:50), WB  
Usage: Concentration: 0.5-1.0 mg/mL (Lot dependent)

---

Comment: Target Species of Antibody: Human

---

Restrictions: For Research Use only

---

## Handling

---

Format: Liquid

---

Concentration: Lot specific

---

Buffer: PBS, pH 7.3, 1 % BSA, 50 % glycerol, 0.02 % sodium azide

---

Preservative: Sodium azide

---

Precaution of Use: This product contains Sodium azide: a POISONOUS AND HAZARDOUS SUBSTANCE which should be handled by trained staff only.

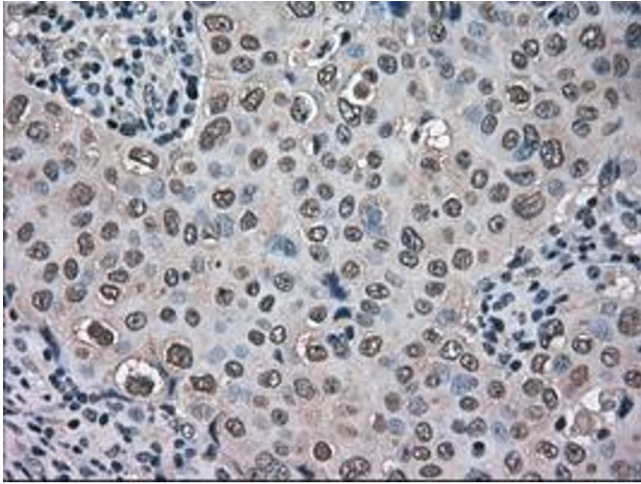
---

Storage: -20 °C

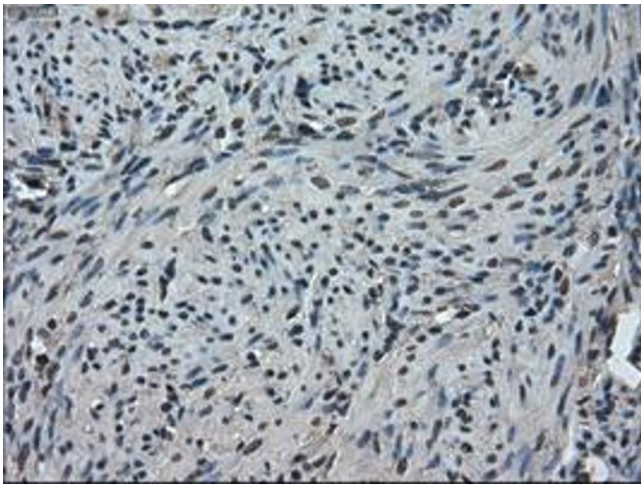
---

Storage Comment: Store at -20°C. Avoid freeze-thaw cycles.

---

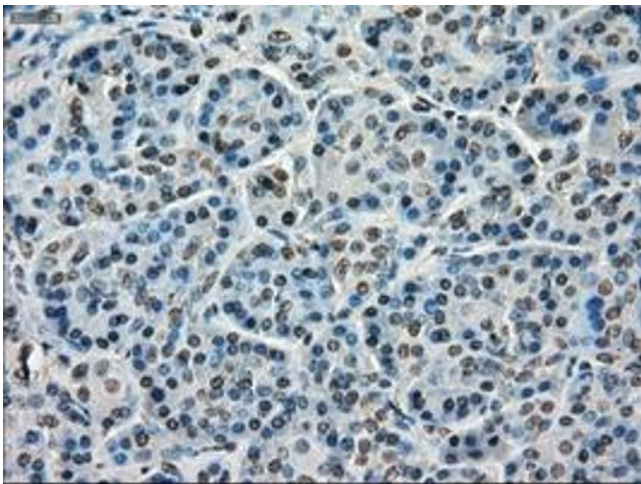


**Image 1.**



**Immunohistochemistry**

**Image 2.**



**Immunohistochemistry**

**Image 3.**

Please check the [product details page](#) for more images. Overall 7 images are available for ABIN1501422.