

Datasheet for ABIN1501475  
**anti-TPD52L3 antibody**



[Go to Product page](#)

11 Images

### Overview

Quantity:	100 µL
Target:	TPD52L3
Reactivity:	Human
Host:	Mouse
Clonality:	Monoclonal
Application:	Western Blotting (WB), Immunohistochemistry (IHC), Immunohistochemistry (Paraffin-embedded Sections) (IHC (p)), Flow Cytometry (FACS)

### Product Details

Immunogen:	Full length human recombinant protein of human TPD52L3(NP_001001875) produced in HEK293T cell.  Type of Immunogen: Recombinant protein
Clone:	8C12
Isotype:	IgG1
Specificity:	Human TPD52L3
Purification:	Protein A/G purified

### Target Details

Target:	TPD52L3
Alternative Name:	TPD52L3 ( <a href="#">TPD52L3 Products</a> )

## Target Details

---

Background:	Name/Gene ID: TPD52L3  Synonyms: TPD52L3, HD55, Protein kinase NYD-SP25, Tumor protein D55, Tumor protein D52-like 3, NYD-SP25, NYDSP25
Gene ID:	89882
NCBI Accession:	<a href="#">NP_001001875</a>

## Application Details

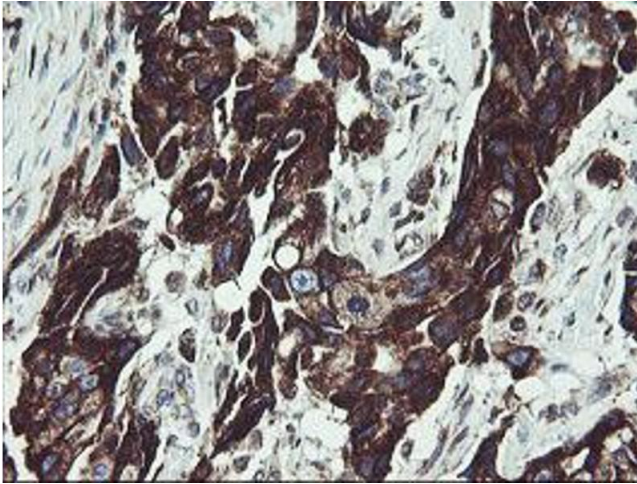
---

Application Notes:	Approved: Flo (1:100), IHC, IHC-P (1:150), WB (1:2000)
Comment:	Target Species of Antibody: Human
Restrictions:	For Research Use only

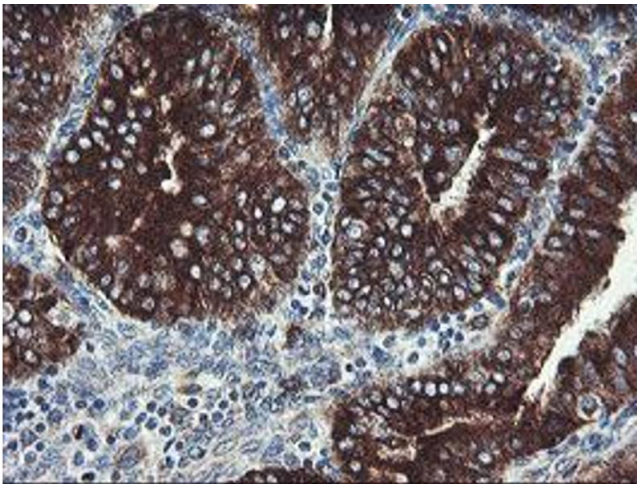
## Handling

---

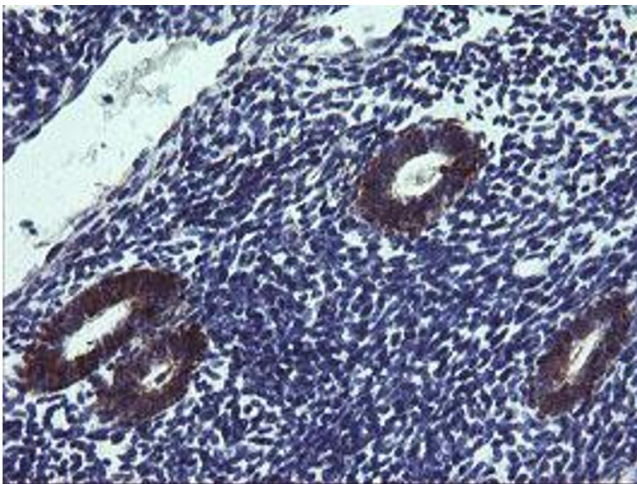
Format:	Liquid
Concentration:	Lot specific
Buffer:	PBS, pH 7.3, 1 % BSA, 50 % glycerol, 0.02 % sodium azide
Preservative:	Sodium azide
Precaution of Use:	This product contains Sodium azide: a POISONOUS AND HAZARDOUS SUBSTANCE which should be handled by trained staff only.
Storage:	-20 °C
Storage Comment:	Store at -20°C. Avoid freeze-thaw cycles.



**Image 1.**



**Image 2.**



**Image 3.**

Please check the [product details page](#) for more images. Overall 11 images are available for ABIN1501475.