



[Go to Product page](#)

Datasheet for ABIN1501574  
**anti-TUBB2B antibody**

3 Images

### Overview

Quantity:	100 µL
Target:	TUBB2B
Reactivity:	Human
Host:	Mouse
Clonality:	Monoclonal
Application:	Western Blotting (WB), Immunofluorescence (IF)

### Product Details

Immunogen:	Full length human recombinant protein of human TUBB2B(NP_821080) produced in HEK293T cell.
	Type of Immunogen: Recombinant protein
Clone:	10C3
Isotype:	IgG1
Specificity:	Human TUBB2B
Purification:	Protein A/G purified

### Target Details

Target:	TUBB2B
Alternative Name:	TUBB2B ( <a href="#">TUBB2B Products</a> )
Background:	Name/Gene ID: TUBB2B

## Target Details

---

Synonyms: TUBB2B, BA506K6.1, Class IIb beta-tubulin, PMGYSA, RP11-506K6.1, Tubulin, beta 2B, Class II beta-tubulin isotype, Tubulin beta-2B chain, Tubulin, beta 2B class IIb

Gene ID: 347733

NCBI Accession: [NP\\_821080](#)

UniProt: [Q9BVA1](#)

Pathways: [Microtubule Dynamics](#)

## Application Details

---

Application Notes: Approved: IF (1:100), WB (1:4000)

Comment: Target Species of Antibody: Human

Restrictions: For Research Use only

## Handling

---

Format: Liquid

Concentration: Lot specific

Buffer: PBS, pH 7.3, 1 % BSA, 50 % glycerol, 0.02 % sodium azide

Preservative: Sodium azide

Precaution of Use: This product contains Sodium azide: a POISONOUS AND HAZARDOUS SUBSTANCE which should be handled by trained staff only.

Handling Advice: Minimize freezing and thawing.

Storage: -20 °C

Storage Comment: Store at -20°C. Avoid freeze-thaw cycles.

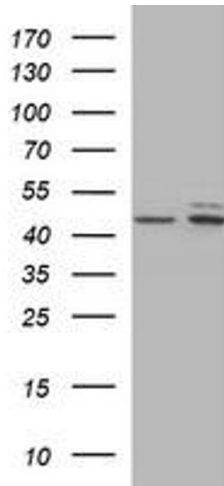


Image 1.

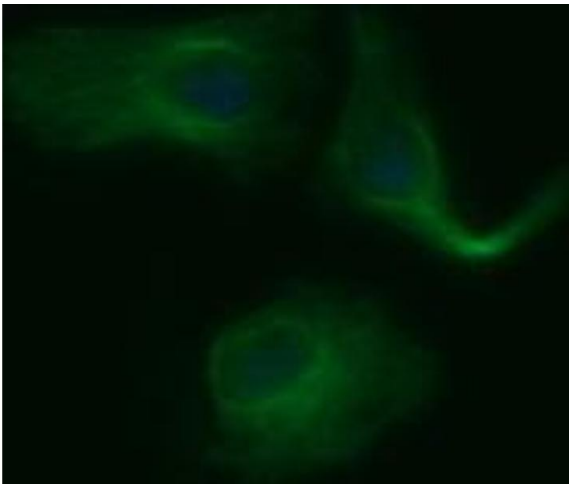


Image 2.

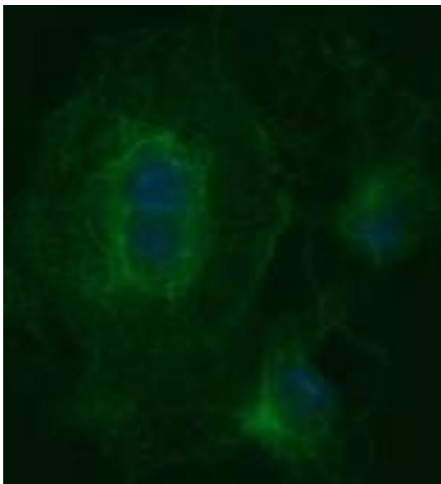


Image 3.