

Datasheet for ABIN1501587
anti-TWF1 antibody (AA 14-208)[Go to Product page](#)

2 Images

Overview

Quantity:	100 µL
Target:	TWF1
Binding Specificity:	AA 14-208
Reactivity:	Human
Host:	Rabbit
Clonality:	Polyclonal
Application:	Western Blotting (WB), Immunofluorescence (IF), Immunocytochemistry (ICC)

Product Details

Immunogen:	Recombinant protein fragment contain a sequence corresponding to a region within amino acids 14 and 208 of PTK9. Percent identity by BLAST analysis: Human (100%), Bovine (95%), Rat (94%), Mouse (92%), Xenopus (80%). Type of Immunogen: Recombinant protein
Isotype:	IgG
Specificity:	Human TWF1 / PTK9
Predicted Reactivity:	Percent identity by BLAST analysis: Human (100%) Bovine (95%) Rat (94%) Mouse (92%) Xenopus (80%).
Purification:	Immunoaffinity purified

Target Details

Target:	TWF1
Alternative Name:	TWF1 / PTK9 (TWF1 Products)
Background:	Name/Gene ID: TWF1 Subfamily: A6 Family: Protein Kinase Synonyms: TWF1, A6, A6 protein tyrosine kinase, Protein A6, Twinfilin, Twinfilin-1, Protein tyrosine kinase, Protein tyrosine kinase 9, PTK9, PTK9 protein tyrosine kinase 9
Gene ID:	5756
UniProt:	Q12792
Pathways:	Regulation of Actin Filament Polymerization , Maintenance of Protein Location

Application Details

Application Notes:	Approved: ICC (1:100 - 1:1000), IF (1:100 - 1:1000), WB (1:500 - 1:3000) Usage: Suggested starting dilutions are as follows: Western blot: 1:500-1:3000, ICC/IF: 1:100-1:1000. Not yet tested in other applications. Optimal working dilutions should be determined experimentally by the end user.
Comment:	Target Species of Antibody: Human
Restrictions:	For Research Use only

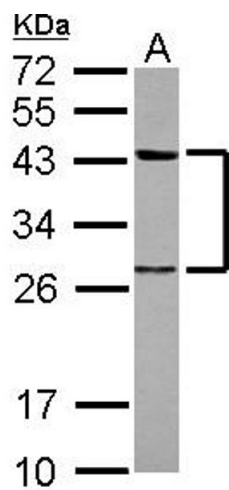
Handling

Format:	Liquid
Concentration:	Lot specific
Buffer:	PBS, pH 7, 1 % BSA, 20 % Glycerol, 0.01 % Thimerosal
Preservative:	Thimerosal (Merthiolate)
Precaution of Use:	This product contains Thimerosal (Merthiolate): a POISONOUS AND HAZARDOUS SUBSTANCE which should be handled by trained staff only.
Handling Advice:	Avoid freeze-thaw cycles.
Storage:	-20 °C

Handling

Storage Comment: Aliquot and freeze at -20°C. Avoid freeze-thaw cycles.

Images



Western Blotting

Image 1.

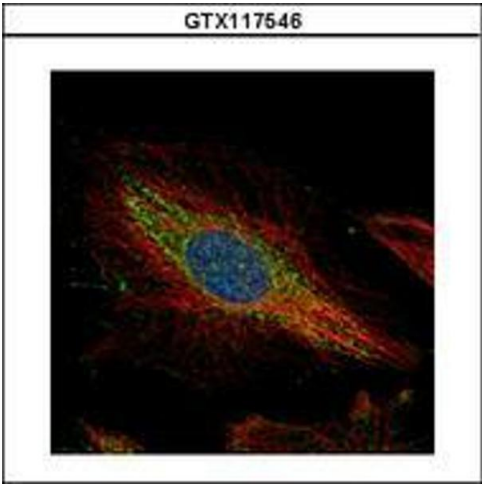


Image 2.