



[Go to Product page](#)

Datasheet for ABIN1501765
anti-XPNPEP3 antibody

6 Images

Overview

Quantity:	100 µL
Target:	XPNPEP3
Reactivity:	Human, Mouse, Rat, Dog, Monkey
Host:	Mouse
Clonality:	Monoclonal
Application:	Western Blotting (WB), Immunohistochemistry (IHC), Immunofluorescence (IF), Flow Cytometry (FACS), Immunohistochemistry (Paraffin-embedded Sections) (IHC (p))

Product Details

Immunogen:	Full length human recombinant protein of human XPNPEP3(NP_071381) produced in HEK293 cell. Type of Immunogen: Recombinant protein
Clone:	5G2
Isotype:	IgG2b
Specificity:	Human XPNPEP3
Purification:	Protein A/G purified

Target Details

Target:	XPNPEP3
Alternative Name:	XPNPEP3 (XPNPEP3 Products)

Target Details

Background:	Name/Gene ID: XPNPEP3 Synonyms: XPNPEP3, APP3, Aminopeptidase P3, NPHPL1, X-Pro aminopeptidase 3
Gene ID:	63929
NCBI Accession:	NP_071381
UniProt:	Q9NQH7

Application Details

Application Notes:	Approved: Flo (1:100), IF (1:100), IHC, IHC-P (1:150), WB (1:500 - 1:2000)
Comment:	Target Species of Antibody: Human
Restrictions:	For Research Use only

Handling

Format:	Liquid
Concentration:	Lot specific
Buffer:	PBS, pH 7.3, 1 % BSA, 50 % glycerol, 0.02 % sodium azide
Preservative:	Sodium azide
Precaution of Use:	This product contains Sodium azide: a POISONOUS AND HAZARDOUS SUBSTANCE which should be handled by trained staff only.
Handling Advice:	Minimize freezing and thawing.
Storage:	-20 °C
Storage Comment:	Store at -20°C. Avoid freeze-thaw cycles.



Immunohistochemistry

Image 1.

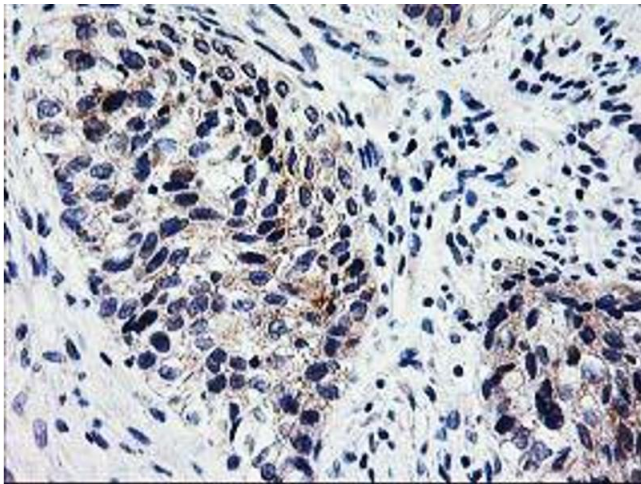
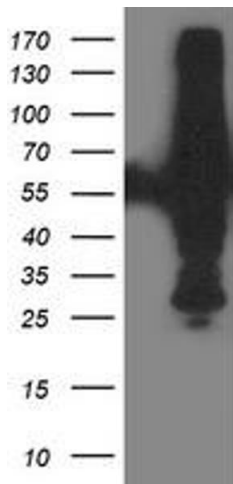


Image 2.



Western Blotting

Image 3.

Please check the [product details page](#) for more images. Overall 6 images are available for ABIN1501765.