



[Go to Product page](#)

Datasheet for ABIN1501799
anti-ZC3H10 antibody (AA 1-228)

1 Image

Overview

| | |
|----------------------|-----------------------|
| Quantity: | 100 µL |
| Target: | ZC3H10 |
| Binding Specificity: | AA 1-228 |
| Reactivity: | Human |
| Host: | Rabbit |
| Clonality: | Polyclonal |
| Application: | Western Blotting (WB) |

Product Details

| | |
|-----------------------|---|
| Immunogen: | Recombinant fragment corresponding to a region within amino acids 1 and 228 of ZC3H10 (SwissProt Q96K80). Percent identity by BLAST analysis: Human (100%), Bovine (97%), Mouse (95%), Rat (94%). Type of Immunogen: Recombinant protein |
| Isotype: | IgG |
| Specificity: | Human ZC3H10 |
| Predicted Reactivity: | Percent identity by BLAST analysis: Human (100%) Bovine (97%) Mouse (95%) Rat (94%). |
| Purification: | Immunoaffinity purified |

Target Details

| | |
|---------|--------|
| Target: | ZC3H10 |
|---------|--------|

Target Details

| | |
|-------------------|--|
| Alternative Name: | ZC3H10 (ZC3H10 Products) |
| Background: | Name/Gene ID: ZC3H10 Synonyms: ZC3H10, ZC3HDC10 |
| Gene ID: | 84872 |
| UniProt: | Q96K80 |

Application Details

| | |
|--------------------|---|
| Application Notes: | Approved: WB (1:500 - 1:3000) Usage: Suggested starting dilutions are as follows: Western blot: 1:500-1:3000. Not yet tested in other applications. Optimal working dilutions should be determined experimentally by the end user. |
| Comment: | Target Species of Antibody: Human |
| Restrictions: | For Research Use only |

Handling

| | |
|--------------------|--|
| Format: | Liquid |
| Concentration: | Lot specific |
| Buffer: | 0.1 M Tris-glycine, pH 7, 20 % Glycerol, 0.01 % Thimerosal |
| Preservative: | Thimerosal (Merthiolate) |
| Precaution of Use: | This product contains Thimerosal (Merthiolate): a POISONOUS AND HAZARDOUS SUBSTANCE which should be handled by trained staff only. |
| Handling Advice: | Avoid freeze-thaw cycles. |
| Storage: | -20 °C |
| Storage Comment: | Aliquot and freeze at -20°C. Avoid freeze-thaw cycles. |

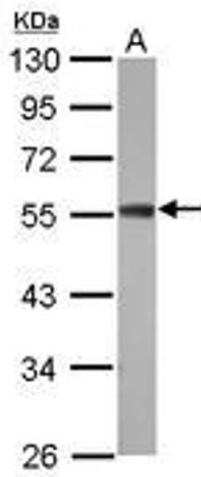


Image 1.