

Datasheet for ABIN1501820
anti-ZFYVE21 antibody



[Go to Product page](#)

1 Image

Overview

Quantity:	100 µL
Target:	ZFYVE21
Reactivity:	Human
Host:	Mouse
Clonality:	Monoclonal
Application:	Western Blotting (WB)

Product Details

Immunogen:	Full length human recombinant protein of human ZFYVE21 (NP_076976) produced in HEK293T cell.
	Type of Immunogen: Recombinant protein
Clone:	2B12
Isotype:	IgG1
Specificity:	Human ZFYVE21
Purification:	Protein A/G purified

Target Details

Target:	ZFYVE21
Alternative Name:	ZFYVE21 (ZFYVE21 Products)
Background:	Name/Gene ID: ZFYVE21

Target Details

Synonyms: ZFYVE21, ZF21, FYVE domain containing 21

Gene ID: 79038

NCBI Accession: [NP_076976](#)

UniProt: [Q9BQ24](#)

Application Details

Application Notes: Approved: WB (1:2000)

Comment: Target Species of Antibody: Human

Restrictions: For Research Use only

Handling

Format: Liquid

Concentration: Lot specific

Buffer: PBS, pH 7.3, 1 % BSA, 50 % glycerol, 0.02 % sodium azide

Preservative: Sodium azide

Precaution of Use: This product contains Sodium azide: a POISONOUS AND HAZARDOUS SUBSTANCE which should be handled by trained staff only.

Handling Advice: Minimize freezing and thawing.

Storage: -20 °C

Storage Comment: Store at -20°C. Avoid freeze-thaw cycles.

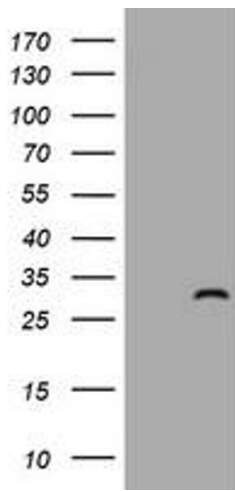


Image 1.