



[Go to Product page](#)

Datasheet for ABIN1501888  
**anti-FGF12 antibody (AA 1-168)**

1 Image

Overview

Quantity:	100 µL
Target:	FGF12
Binding Specificity:	AA 1-168
Reactivity:	Human, Mouse, Cow
Host:	Rabbit
Clonality:	Polyclonal
Conjugate:	This FGF12 antibody is un-conjugated
Application:	Western Blotting (WB)

Product Details

Immunogen:	Recombinant protein fragment contain a sequence corresponding to a region within amino acids 1 and 168 (P61328) of FGF12. Percent identity by BLAST analysis: Human, Bovine (100%), Monkey, Rat (99%), Chicken (98%), Xenopus (95%), Zebrafish (88%).  Type of Immunogen: Recombinant protein
Isotype:	IgG
Specificity:	Human, mouse FGF12
Predicted Reactivity:	Percent identity by BLAST analysis: Human, Bovine (100%) Monkey, Rat (99%) Chicken (98%) Xenopus (95%) Zebrafish (88%).
Purification:	Immunoaffinity purified

## Target Details

---

Target:	FGF12
Alternative Name:	FGF12 ( <a href="#">FGF12 Products</a> )
Background:	Name/Gene ID: FGF12 Family: HBGF  Synonyms: FGF12, FGF-12, FGF12B, FHF-1, FHF1, Myocyte-activating factor, Fibroblast growth factor 12, Fibroblast growth factor 12B
Gene ID:	2257
UniProt:	<a href="#">P61328</a>
Pathways:	<a href="#">Negative Regulation of Transporter Activity</a>

## Application Details

---

Application Notes:	Approved: WB (1:500 - 1:3000)  Usage: Suggested starting dilutions are as follows: Western blot: 1:500-1:3000. Not yet tested in other applications. Optimal working dilutions should be determined experimentally by the end user.
Comment:	Target Species of Antibody: Human
Restrictions:	For Research Use only

## Handling

---

Format:	Liquid
Concentration:	Lot specific
Buffer:	0.1 M Tris-glycine, pH 7, 20 % Glycerol, 0.01 % Thimerosal
Preservative:	Thimerosal (Merthiolate)
Precaution of Use:	This product contains Thimerosal (Merthiolate): a POISONOUS AND HAZARDOUS SUBSTANCE which should be handled by trained staff only.
Handling Advice:	Avoid freeze-thaw cycles.
Storage:	-20 °C
Storage Comment:	Aliquot and freeze at -20°C. Avoid freeze-thaw cycles.

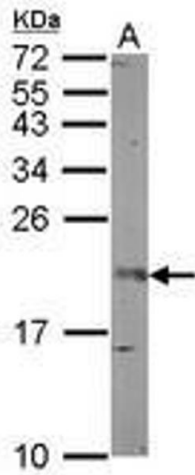


Image 1.