



[Go to Product page](#)

Datasheet for ABIN1501895  
**anti-HSF2BP antibody (AA 1-259)**

3 Images

Overview

Quantity:	100 µL
Target:	HSF2BP
Binding Specificity:	AA 1-259
Reactivity:	Human
Host:	Rabbit
Clonality:	Polyclonal
Application:	Western Blotting (WB), Immunohistochemistry (IHC), Immunohistochemistry (Paraffin-embedded Sections) (IHC (p))

Product Details

Immunogen:	Recombinant fragment corresponding to a region within amino acids 1 and 259 of HSF2BP (SwissProt O75031). Percent identity by BLAST analysis: Human (100%), Bovine (93%), Rat (91%).  Type of Immunogen: Recombinant protein
Isotype:	IgG
Specificity:	Human, mouse HSF2BP
Predicted Reactivity:	Percent identity by BLAST analysis: Human (100%) Bovine (93%) Rat (91%).
Purification:	Immunoaffinity purified

## Target Details

---

Target:	HSF2BP
Alternative Name:	HSF2BP ( <a href="#">HSF2BP Products</a> )
Background:	Name/Gene ID: HSF2BP  Synonyms: HSF2BP
Gene ID:	11077
UniProt:	<a href="#">O75031</a>

## Application Details

---

Application Notes:	Approved: IHC, IHC-P (1:100 - 1:1000), WB (1:500 - 1:3000)  Usage: Suggested starting dilutions are as follows: Western blot: 1:500-1:3000, IHC-Paraffin: 1:100-1:1000 [suggested antigen retrieval using heat mediated 10 mM Citrate buffer ( pH 6.0) or Tris-EDTA buffer ( pH 8.0)]. Not yet tested in other applications. Optimal working dilutions should be determined experimentally by the end user.
Comment:	Target Species of Antibody: Human
Restrictions:	For Research Use only

## Handling

---

Format:	Liquid
Concentration:	Lot specific
Buffer:	0.1 M Tris-glycine, pH 7, 20 % Glycerol, 0.01 % Thimerosal
Preservative:	Thimerosal (Merthiolate)
Precaution of Use:	This product contains Thimerosal (Merthiolate): a POISONOUS AND HAZARDOUS SUBSTANCE which should be handled by trained staff only.
Handling Advice:	Avoid freeze-thaw cycles.
Storage:	-20 °C
Storage Comment:	Aliquot and freeze at -20°C. Avoid freeze-thaw cycles.

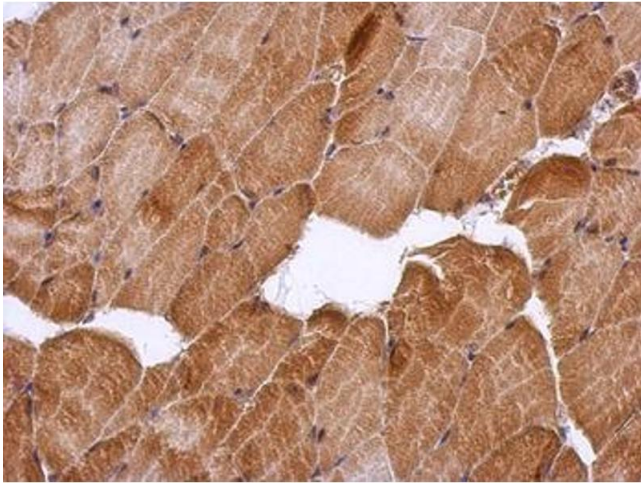


Image 1.

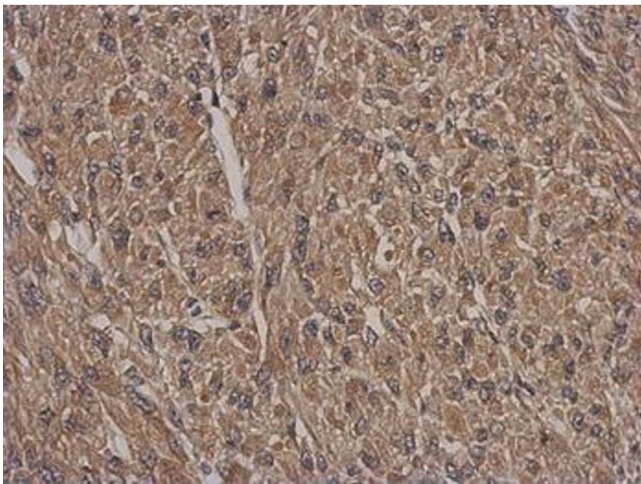


Image 2.

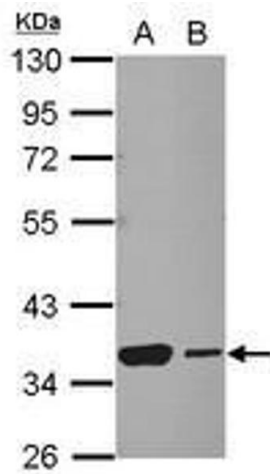


Image 3.