

Datasheet for ABIN1501897
anti-KCTD19 antibody (AA 1-162)

3 Images

[Go to Product page](#)

Overview

Quantity:	100 µL
Target:	KCTD19
Binding Specificity:	AA 1-162
Reactivity:	Human, Mouse
Host:	Rabbit
Clonality:	Polyclonal
Application:	Western Blotting (WB), Immunohistochemistry (IHC), Immunohistochemistry (Paraffin-embedded Sections) (IHC (p))

Product Details

Immunogen:	Recombinant protein fragment contain a sequence corresponding to a region within amino acids 1 and 162 (Q17RG1) of KCTD19. Percent identity by BLAST analysis: Type of Immunogen: Recombinant protein
Isotype:	IgG
Specificity:	Human, mouse KCTD19
Predicted Reactivity:	Percent identity by BLAST analysis:
Purification:	Immunoaffinity purified

Target Details

Target:	KCTD19
---------	--------

Target Details

Alternative Name: KCTD19 ([KCTD19 Products](#))

Background: Name/Gene ID: KCTD19

Synonyms: KCTD19

Gene ID: 146212

UniProt: [Q17RG1](#)

Application Details

Application Notes: Approved: IHC, IHC-P (1:100 - 1:1000), WB (1:500 - 1:3000)

Usage: Suggested starting dilutions are as follows: Western blot: 1:500-1:3000, IHC-Paraffin: 1:100-1:1000. Not yet tested in other applications. Optimal working dilutions should be determined experimentally by the end user.

Comment: Target Species of Antibody: Human

Restrictions: For Research Use only

Handling

Format: Liquid

Concentration: Lot specific

Buffer: PBS, pH 7, 1 % BSA, 20 % Glycerol, 0.01 % Thimerosal

Preservative: Thimerosal (Merthiolate)

Precaution of Use: This product contains Thimerosal (Merthiolate): a POISONOUS AND HAZARDOUS SUBSTANCE which should be handled by trained staff only.

Handling Advice: Avoid freeze-thaw cycles.

Storage: -20 °C

Storage Comment: Aliquot and freeze at -20°C. Avoid freeze-thaw cycles.

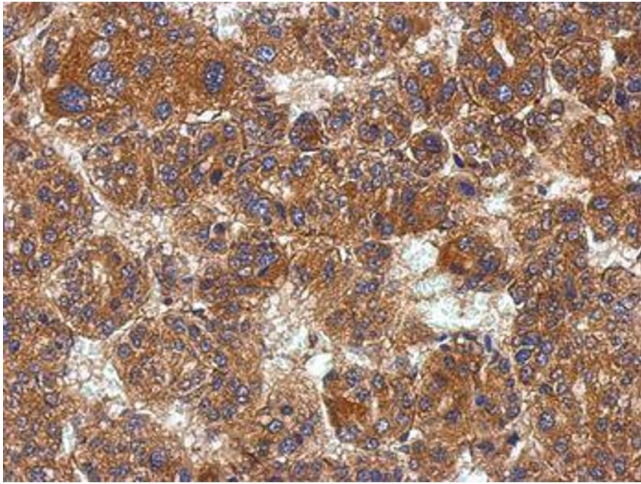


Image 1.

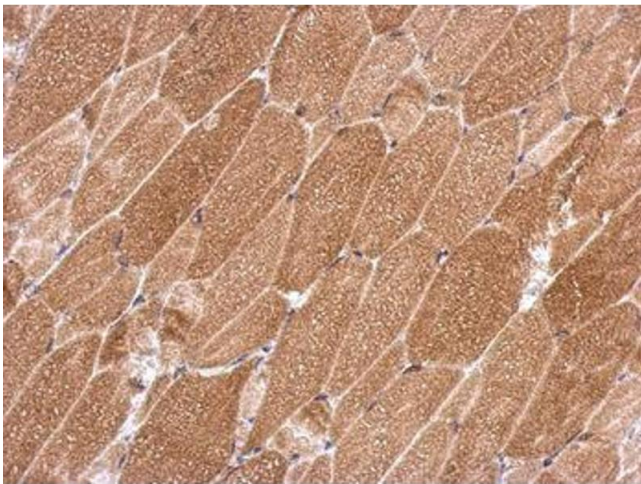


Image 2.

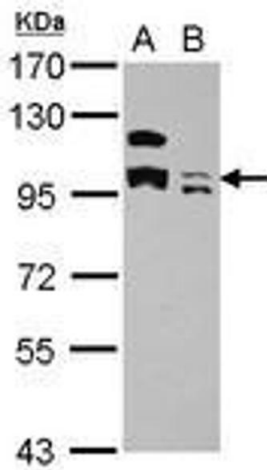


Image 3.