

Datasheet for ABIN1502010

anti-Tryptophan Hydroxylase 1 antibody[Go to Product page](#)**1** Image

Overview

Quantity:	100 µg
Target:	Tryptophan Hydroxylase 1 (TPH1)
Reactivity:	Human, Rat, Rabbit
Host:	Mouse
Clonality:	Monoclonal
Application:	Western Blotting (WB)

Product Details

Immunogen:	Recombinant rabbit Tryptophan Hydroxylase. Type of Immunogen: Recombinant protein
Clone:	Try-63
Isotype:	IgG3
Specificity:	Human, rat, rabbit. No cross reactivity with other proteins.
Cross-Reactivity (Details):	No cross reactivity with other proteins.
Purification:	Affinity purified

Target Details

Target:	Tryptophan Hydroxylase 1 (TPH1)
Alternative Name:	TPH1 / TPH (TPH1 Products)

Target Details

Background:	Name/Gene ID: TPH1 Family: Monooxygenase Synonyms: TPH1, L-tryptophan hydroxylase, TRPH, Tryptophan 5-hydroxylase 1, Tryptophan 5-monooxygenase 1, TPRH, Tryptophan hydroxylase 1, TPH
Gene ID:	7166
UniProt:	P17752
Pathways:	Feeding Behaviour

Application Details

Application Notes:	Optimal working dilution should be determined by the investigator.
Comment:	Target Species of Antibody: Rabbit
Restrictions:	For Research Use only

Handling

Format:	Lyophilized
Reconstitution:	1.2 % sodium acetate or neutral PBS.
Concentration:	Lot specific
Buffer:	Lyophilized from 1.2 % sodium acetate, 2 mg BSA, 0.01 mg sodium azide as preservative
Preservative:	Sodium azide
Precaution of Use:	This product contains Sodium azide: a POISONOUS AND HAZARDOUS SUBSTANCE which should be handled by trained staff only.
Storage:	4 °C,-20 °C
Storage Comment:	Short term: 4°C Long term: -20°C.

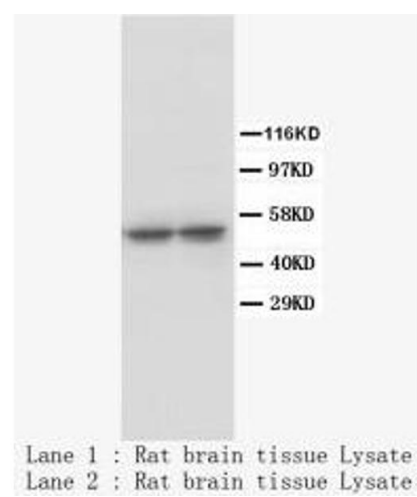


Image 1.